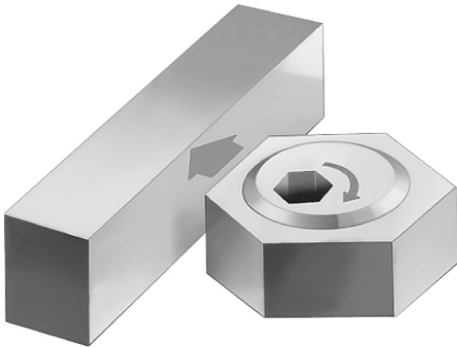
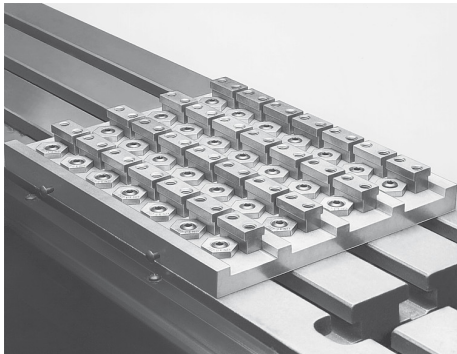
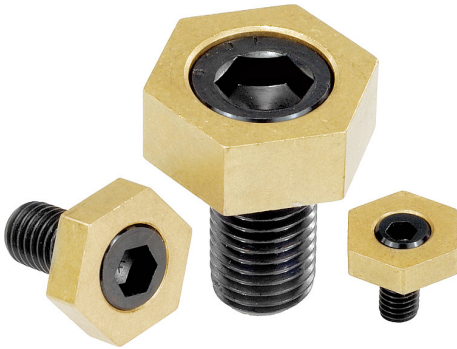


Low-profile equal hex cam clamps

Item description/product images



Description

Material:

Eccentric screw tempered steel,
brass hexagonal nut

Surface finish:

Eccentric screw heat-treated class 10.9, black oxide finish

Note:

The very small height of the cam clamp makes it possible to solve a large number of problems with small pieces and nesting. The brass fastening nut offers extremely safe and stable fastening, at the same time keeping the surface protected. The simultaneous use of several cam clamps makes it possible to fit out whole pallets.

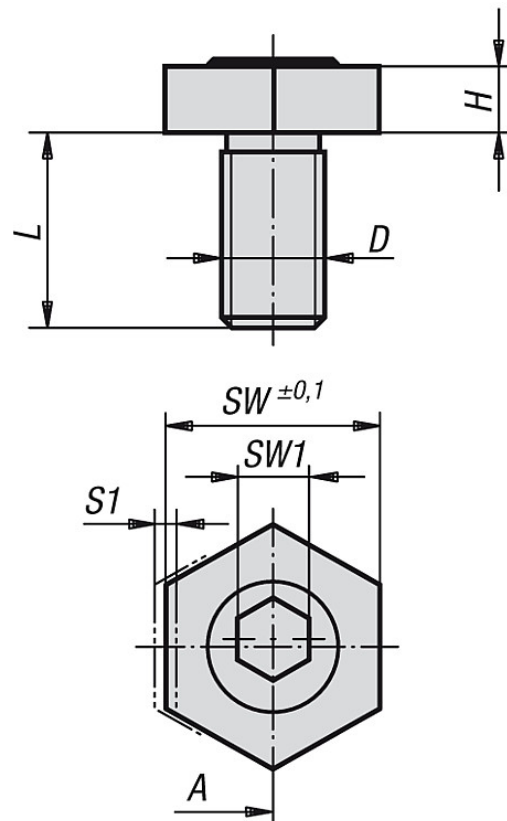
"A" = distance from workpiece to the centre of the thread (clamping screw).

On request:

Spare eccentric screws.

Low-profile equal hex cam clamps

Drawings



Overview of items

Order No.	A	D	H	L	SW	SW1	S1 (Clamping travel)	Clamping force kN	Tightening torque max. Nm	Approx. weight kg
K0026.04	3,8	M4	2,8	9,5	7,93	3	0,8	0,9	2,2	0,003
K0026.06	7,8	M6	4,8	11	15,86	4	1,3	3,4	8,5	0,011
K0026.08	10,2	M8	4,8	15	20,61	5	1	3,4	11,3	0,018
K0026.10	10,2	M10	6,4	19	20,61	7	1,4	8,9	28,06	0,027
K0026.12	12,7	M12	9,5	23	25,38	8	2	17,8	88	0,053
K0026.16	15	M16	12,7	27	30,13	12	2,5	27,7	135	0,103