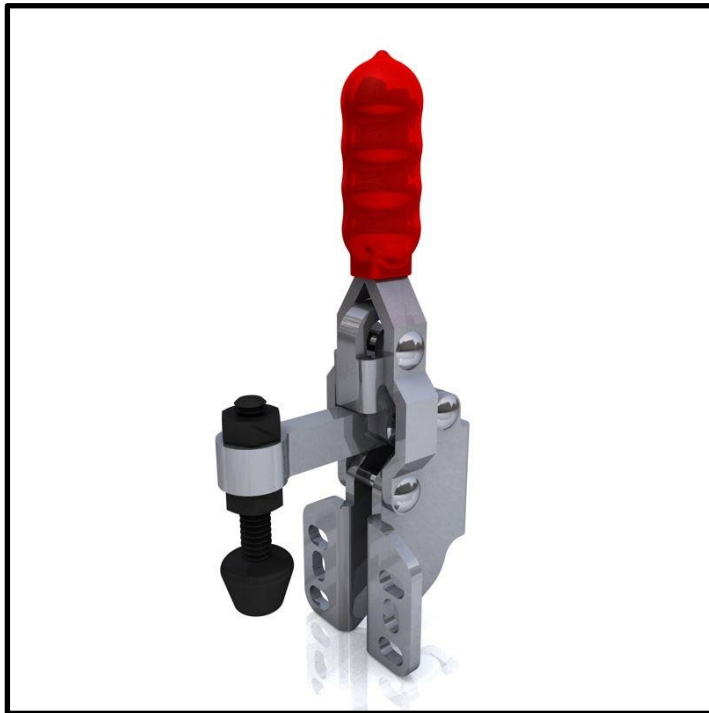


Vertical Toggle Clamp

Part No. GH-12003-B



Product Description

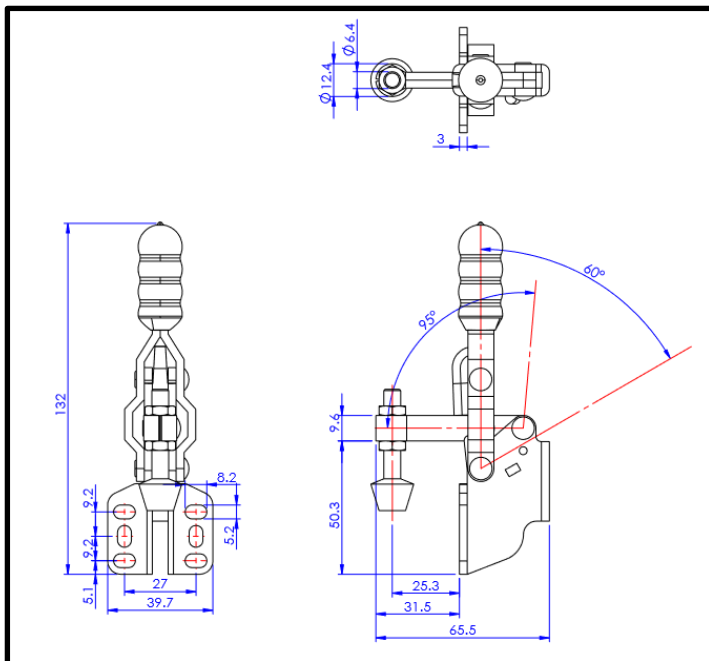
Vertical Toggle Clamp Side
Mounting Slotted Arm Size 150Kg

Key Features

Overall Height: 170mm
Underarm Height: 64mm
Arm Length: 35mm
Holding Force: 150Kg

Other Features

Arm Opens: 108°
Handle Opens: 70°
Weight: 0.28Kg



Material

Clamp: Zinc Plated Mild Steel
Spindle: Zinc Plated Mild Steel
Handle: uPVC
Neoprene Cap: Neoprene

What's In The Bag?

GH-12003-B: Toggle Clamp
2x FW-140: Flanged Washers For M6 Spindles
FC-065010: M6x50mm Zinc Plated Steel Spindle
With Nuts
NC-06: Neoprene Cap For M6 Spindles



goodhanduk.co.uk

01908 221 151