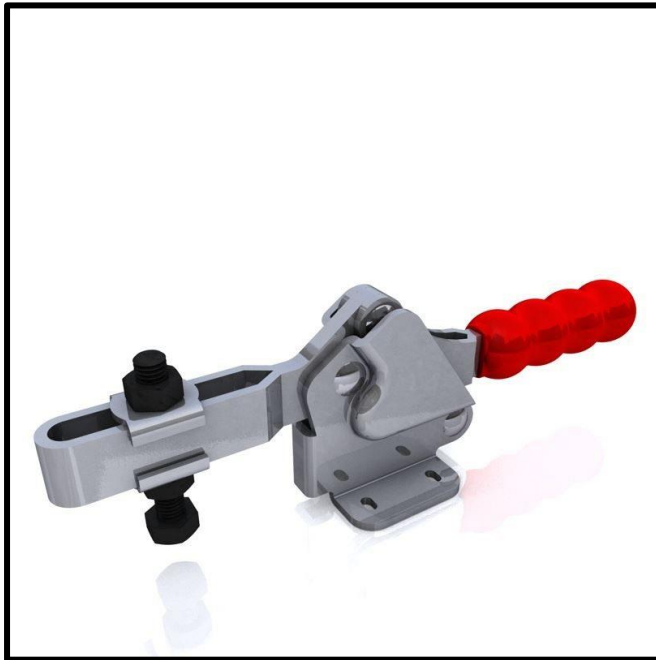


# Horizontal Toggle Clamp

Part No. GH-22502-B



## Product Description

Horizontal Toggle Clamp Flat  
Base Slotted Arm Size 250daN

## Key Features

Overall Height:	66.5mm
Underarm Height:	34mm
Arm Length	79mm
Holding Force	250daN

## Other Features

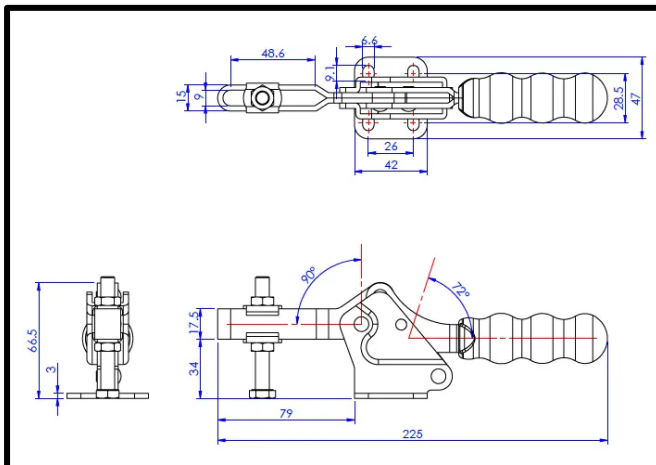
Arm Opens:	90°
Handle Opens:	72°
Weight:	0.44Kg

## Material

Toggle Clamp:	Zinc Plated Mild Steel
Spindle:	Zinc Plated Mild Steel
Handle:	uPVC

## Whats In The Bag?

Toggle Clamp:	GH-22502-A
Spindle:	SA-086512
2x Fanged Washers:	FW-516



[goodhanduk.co.uk](http://goodhanduk.co.uk)

01908 221 151