

## Hook clamps

### Item description/product images



### Description

**Material:**

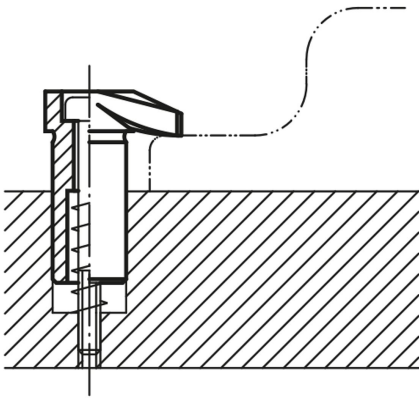
Carbon steel, tempered.

**Version:**

Black oxidised.

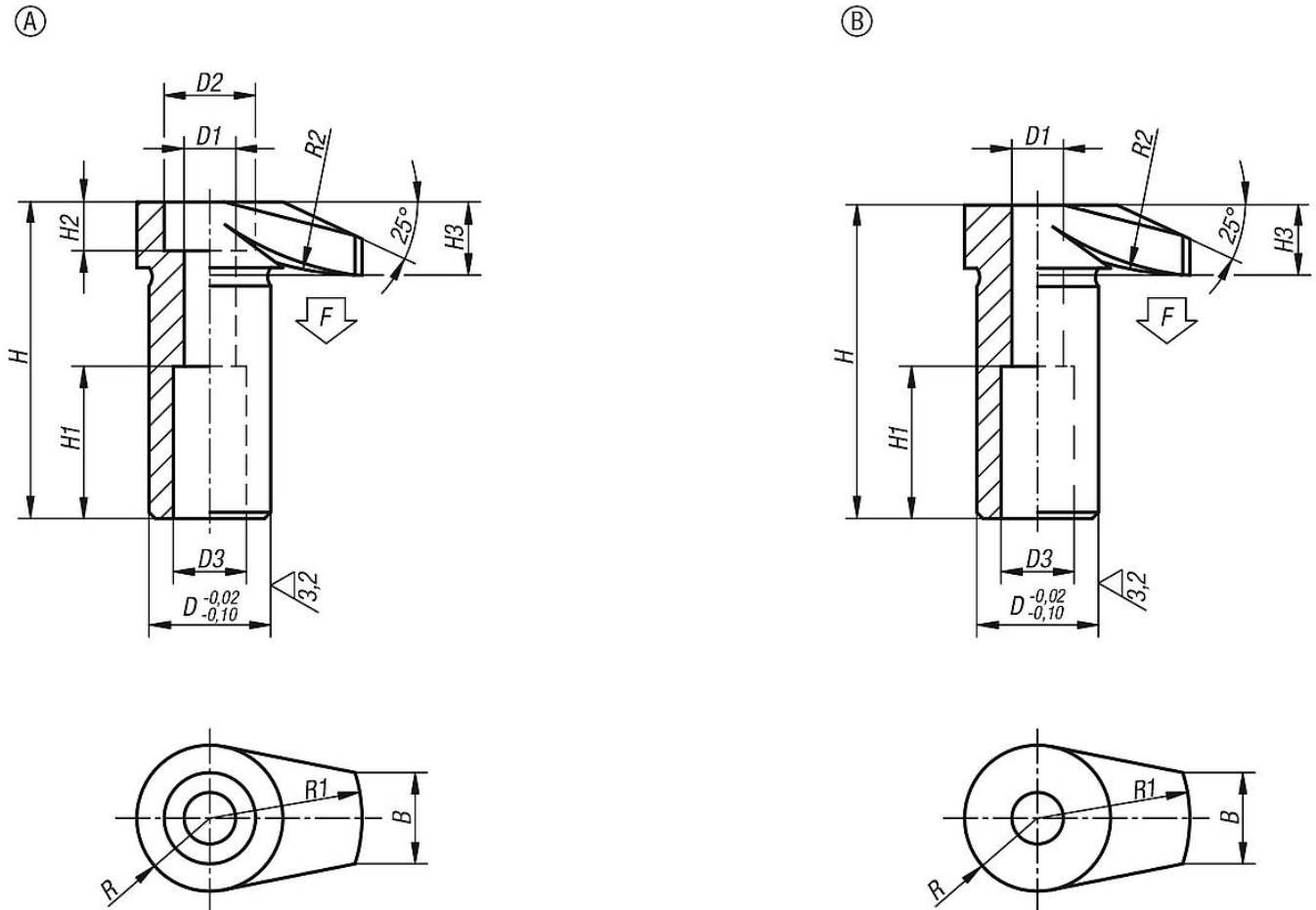
**Accessory:**

Springs K1554 and socket head screws K0869.



# Hook clamps

## Drawings



## Overview of items

### Hook clamps

| Order No. | Form | D  | D1   | D2 | D3 | H  | H1 | H2 | H3 | B  | R  | R1 | R2 | F max. kN |
|-----------|------|----|------|----|----|----|----|----|----|----|----|----|----|-----------|
| K0012.06  | A    | 16 | 6,5  | 11 | 10 | 42 | 20 | 6  | 10 | 11 | 9  | 20 | 30 | 4,8       |
| K0012.08  | A    | 20 | 8,5  | 15 | 12 | 52 | 25 | 8  | 12 | 15 | 12 | 25 | 50 | 8,8       |
| K0012.10  | A    | 25 | 10,5 | 18 | 14 | 66 | 32 | 10 | 16 | 17 | 14 | 32 | 60 | 13,9      |
| K0012.12  | A    | 32 | 12,5 | 20 | 17 | 83 | 40 | 12 | 20 | 20 | 18 | 40 | 80 | 20,2      |

| Order No. | Form | D  | D1   | D3 | H    | H1 | H3   | B  | R  | R1 | R2 | F max. kN |
|-----------|------|----|------|----|------|----|------|----|----|----|----|-----------|
| K0012.106 | B    | 16 | 6,5  | 10 | 41,5 | 20 | 9,5  | 11 | 9  | 20 | 30 | 4,8       |
| K0012.108 | B    | 20 | 8,5  | 12 | 51,5 | 25 | 11,5 | 15 | 12 | 25 | 50 | 8,8       |
| K0012.110 | B    | 25 | 10,5 | 14 | 65,5 | 32 | 15,5 | 17 | 14 | 32 | 60 | 13,9      |
| K0012.112 | B    | 32 | 12,5 | 17 | 82,5 | 40 | 19,5 | 20 | 18 | 40 | 80 | 20,2      |