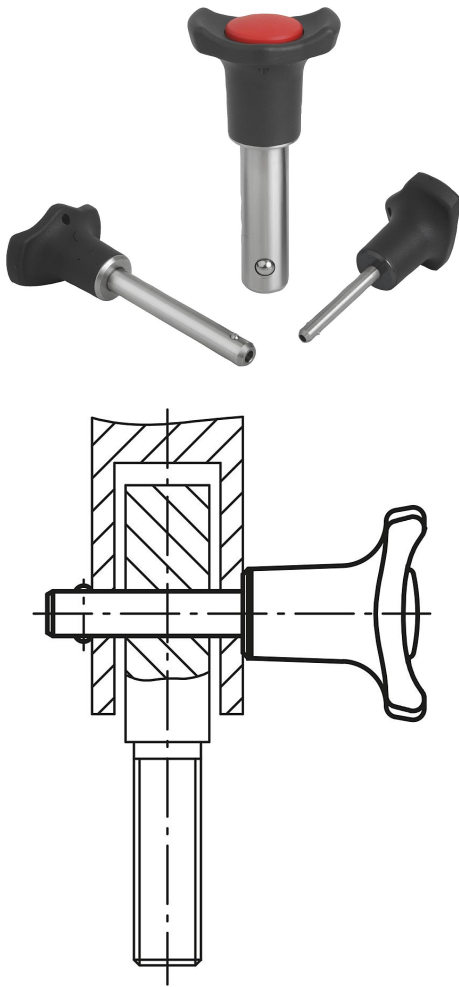


Ball lock pins self-locking

Item description/product images



Description

Material:

Grip and push button thermoplastic.
Metal parts stainless steel.

Version:

Grip black.
Push button traffic red.
Steel parts bright.

Note:

Ball lock pins are used for quick and easy fastening and joining of parts and workpieces.
The two balls are disengaged by pressing the push button and the pin can be slipped into holes in the workpieces. Release the button to lock the balls and secure the connection.
Form A is suitable for applications where high demands and precision are required.

Shearing force double shear $(F) = S \cdot \tau \cdot aB \text{ max.}$

Features:

Form A:
Pin ground, metal collar, high axial pull-out force
Form B:
Pin h9, plastic collar, low axial pull-out force

Accessory:

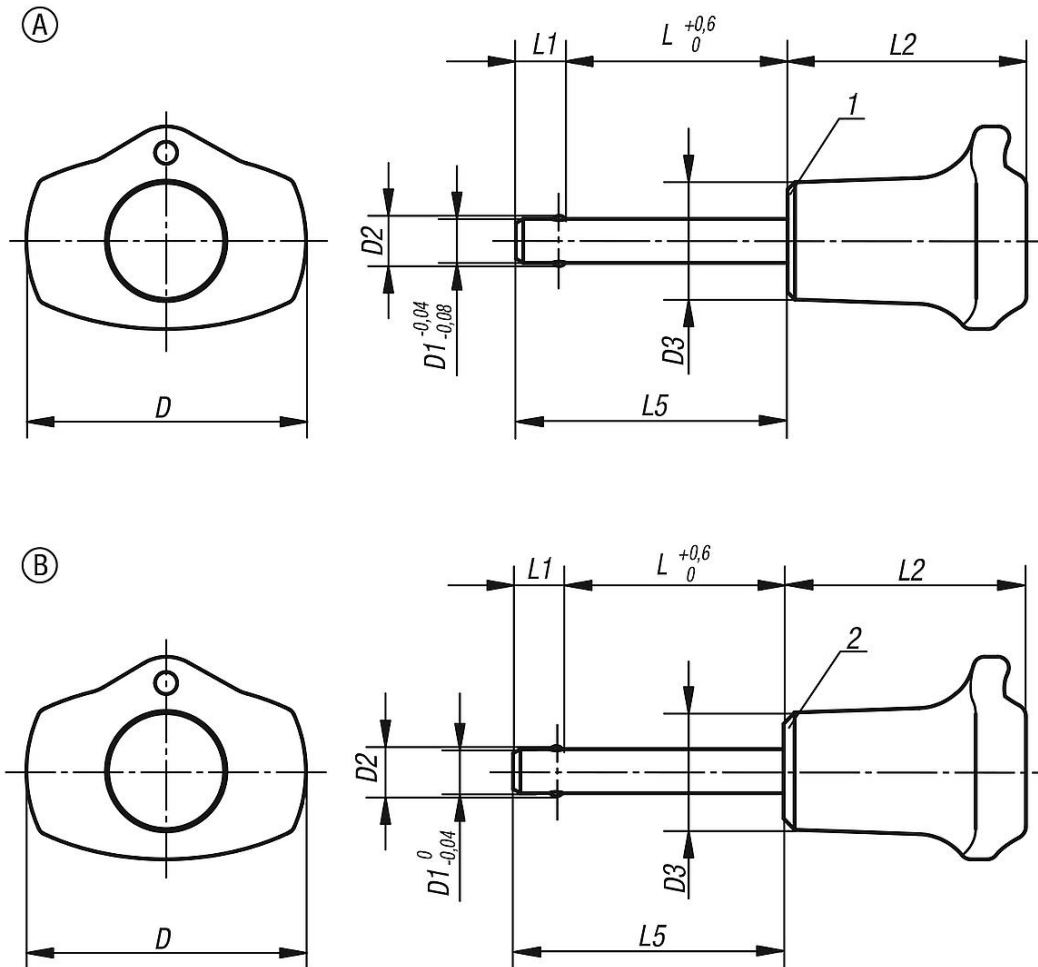
Bushes for ball lock pins K0724
Safety spiral cable K0367
Retaining cable with loop K0367
Key ring K0367

Drawing reference:

- 1) Metal collar
- 2) Plastic collar

Ball lock pins self-locking

Drawings



Overview of items

Ball lock pins, self-locking, Form A, metal collar

Order No.	D	D1	D2	D3	L	L1	L2	L5	Receiving hole H11	Shearing force double shear max.kN
K0363.3805***	38	5	5,5	16	10/15/20/25/30	6	32,5	16/21/26/31/36	5	15
K0363.3806***	38	6	6,85	16	10/15/20/25/30/35/40/45/50	7	32,5	17/22/27/32/37/42/47/52/57	6	22
K0363.3808***	38	8	9,5	16	20/25/30/35/40/45/50	8	32,5	28/33/38/43/48/53/58	8	38
K0363.4710***	47	10	12	23	20/25/30/35/40/45/50/60	9	40	29/34/39/44/49/54/59/69	10	60
K0363.4712***	47	12	14,5	23	25/30/35/40/45/50/60/70/80	10	40	35/40/45/50/55/60/70/80/90	12	86
K0363.4716***	47	16	19	23	30/35/40/45/50/60/70/80	13	40	43/48/53/58/63/73/83/93	16	153

Ball lock pins, self-locking, Form B, plastic collar

Order No.	D	D1	D2	D3	L	L1	L2	L5	Receiving hole H11	Shearing force double shear max.kN
K0363.13805***	38	5	5,5	16	15/20/25/30	5,9	33	20,9/25,9/30,9/35,9	5	15
K0363.13806***	38	6	6,85	16	30/40/50	6,8	33	36,8/46,8/56,8	6	22
K0363.13808***	38	8	9,5	16	30/40/50	7,8	33	37,8/47,8/57,8	8	38

