

# Ring bolts DIN 580

## Item description/product images



### Description

#### Material:

1.1141 steel, 1.4301 stainless steel or 1.4401 stainless steel.

#### Version:

drop forged.

#### Note:

For high demand hoisting and carrying tasks in safety-relevant areas (machine construction, load handling equipment, lifting tackle).

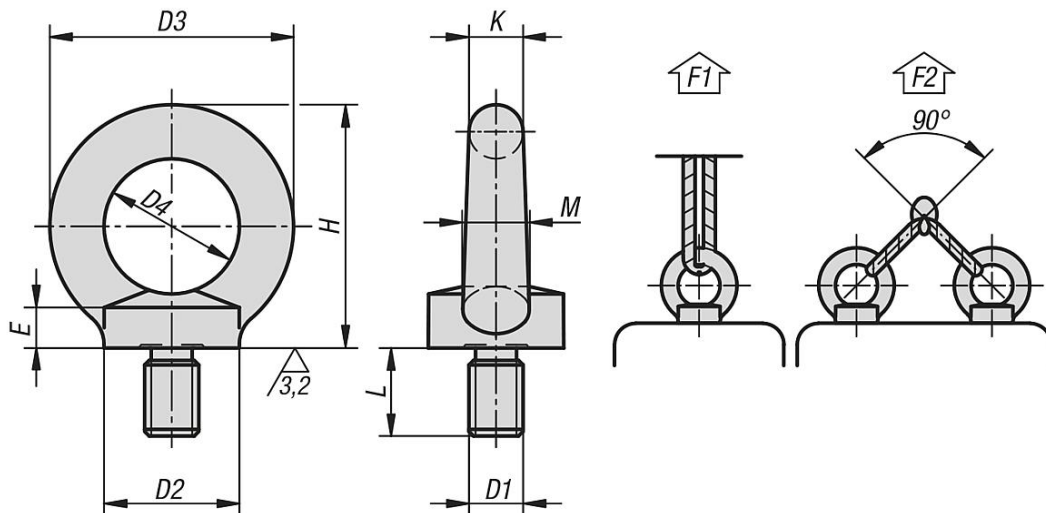
The CE mark is impressed into the ring bolt.

F2 permissible load under max. 45° per ring bolt.

#### On request:

Certificate of conformity.

## Drawings



## Overview of items

### Ring bolts DIN 580

Order No.	Main material	Steel code	D1	L	D2	D3	D4	E	H	K	M	F1 max. kN	F2 max. kN	Permissible load kg
K0767.08	steel	1.1141	M8	13	20	36	20	6	36	8	10	1,4	0,95	96,9
K0767.10	steel	1.1141	M10	17	25	45	25	8	45	10	12	2,3	1,7	173,4
K0767.12	steel	1.1141	M12	20,5	30	54	30	10	53	12	14	3,4	2,4	244,8
K0767.16	steel	1.1141	M16	27	35	63	35	12	62	14	16	7	5	510
K0767.20	steel	1.1141	M20	30	40	72	40	14	71	16	19	12	8,3	846,6
K0767.24	steel	1.1141	M24	36	50	90	50	18	90	20	24	18	12,7	1295,4
K0767.108	stainless steel	1.4301	M8	13	20	36	20	6	36	8	10	1,4	0,95	96,9
K0767.110	stainless steel	1.4301	M10	17	25	45	25	8	45	10	12	2,3	1,7	173,4
K0767.112	stainless steel	1.4301	M12	20,5	30	54	30	10	53	12	14	3,4	2,4	244,8
K0767.116	stainless steel	1.4301	M16	27	35	63	35	12	62	14	16	7	5	510
K0767.120	stainless steel	1.4301	M20	30	40	72	40	14	71	16	19	12	8,3	846,6
K0767.124	stainless steel	1.4301	M24	36	50	90	50	18	90	20	24	18	12,7	1295,4
K0767.208	stainless steel	1.4401	M8	13	20	36	20	6	36	8	10	1,4	0,95	96,9

## Ring bolts DIN 580

### Overview of items

Order No.	Main material	Steel code	D1	L	D2	D3	D4	E	H	K	M	F1 max. kN	F2 max. kN	Permissible load kg
<b>K0767.210</b>	stainless steel	1.4401	M10	17	25	45	25	8	45	10	12	2,3	1,7	173,4
<b>K0767.212</b>	stainless steel	1.4401	M12	20,5	30	54	30	10	53	12	14	3,4	2,4	244,8
<b>K0767.216</b>	stainless steel	1.4401	M16	27	35	63	35	12	62	14	16	7	5	510
<b>K0767.220</b>	stainless steel	1.4401	M20	30	40	72	40	14	71	16	19	12	8,3	846,6
<b>K0767.224</b>	stainless steel	1.4401	M24	36	50	90	50	18	90	20	24	18	12,7	1295,4