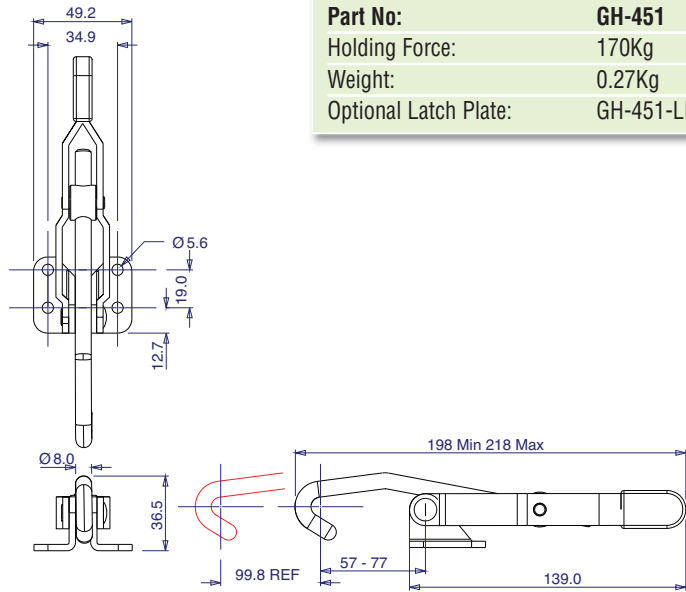
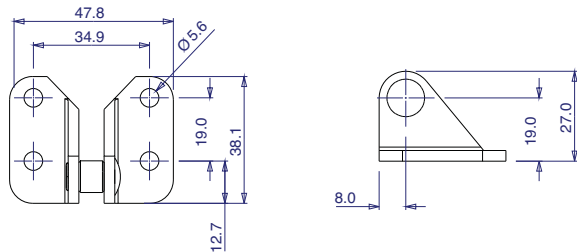


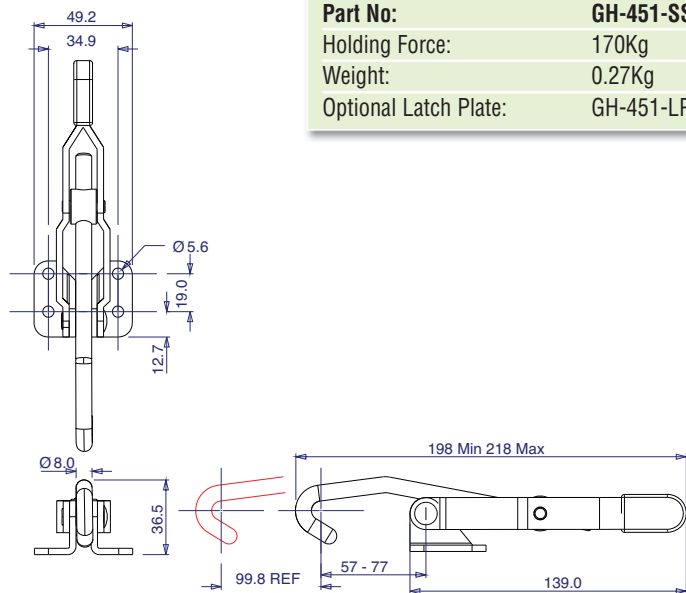
► Hook Versions



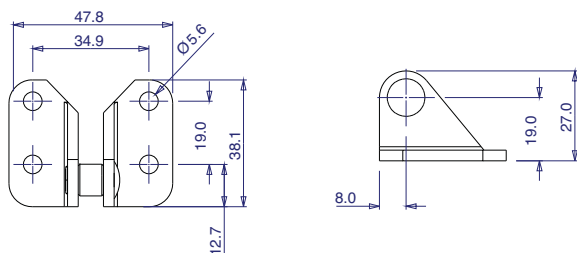
<b>Part No:</b>	<b>GH-451</b>
<b>Holding Force:</b>	170Kg
<b>Weight:</b>	0.27Kg
<b>Optional Latch Plate:</b>	GH-451-LP (below)



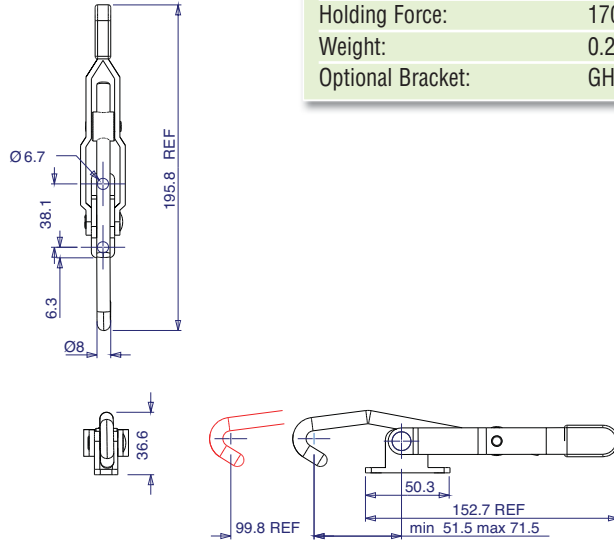
stainless



<b>Part No:</b>	<b>GH-451-SS</b>
<b>Holding Force:</b>	170Kg
<b>Weight:</b>	0.27Kg
<b>Optional Latch Plate:</b>	GH-451-LPSS (below)

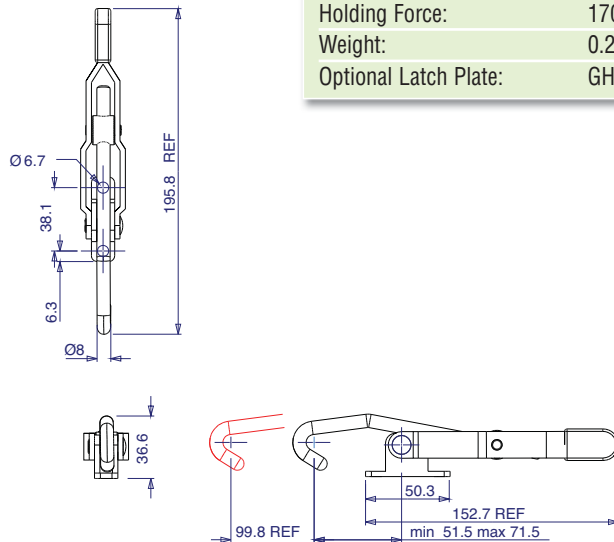


► Hook Versions

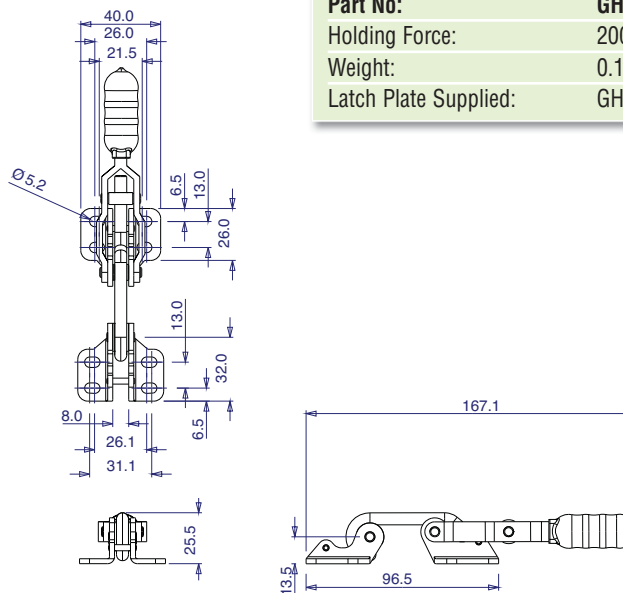


<b>Part No:</b>	<b>GH-452</b>
<b>Holding Force:</b>	170Kg
<b>Weight:</b>	0.26Kg
<b>Optional Bracket:</b>	GH-451-LP (see page 75)

stainless



<b>Part No:</b>	<b>GH-452-SS</b>
<b>Holding Force:</b>	170Kg
<b>Weight:</b>	0.26Kg
<b>Optional Latch Plate:</b>	GH-451-LPSS (see page 75)

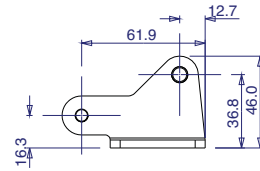
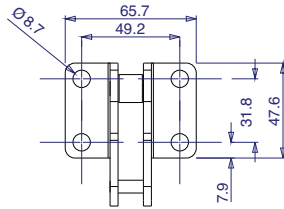
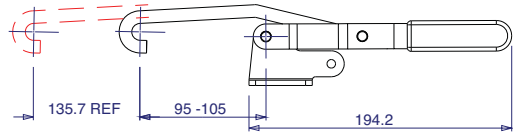
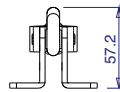
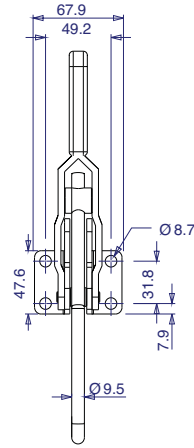


<b>Part No:</b>	<b>GH-40200</b>
<b>Holding Force:</b>	200Kg
<b>Weight:</b>	0.155Kg
<b>Latch Plate Supplied:</b>	GH-40200-LP



## ► Hook Versions

<b>Part No:</b>	<b>GH-40371</b>
<b>Holding Force:</b>	340Kg
<b>Weight:</b>	0.27Kg
<b>Optional Latch Plate:</b>	GH-40371-LP (below)



<b>Part No:</b>	<b>GH-43810</b>
<b>Holding Force:</b>	450Kg
<b>Weight:</b>	1.13Kg
<b>Optional Latch Plate:</b>	GH-43810-LP (below)

