

Pull handles oval with thru hole

Item description/product images



Description

Material:

Oval aluminium EN AW-6060

Version:

Black or ruby red RAL 3003, powder-coated.

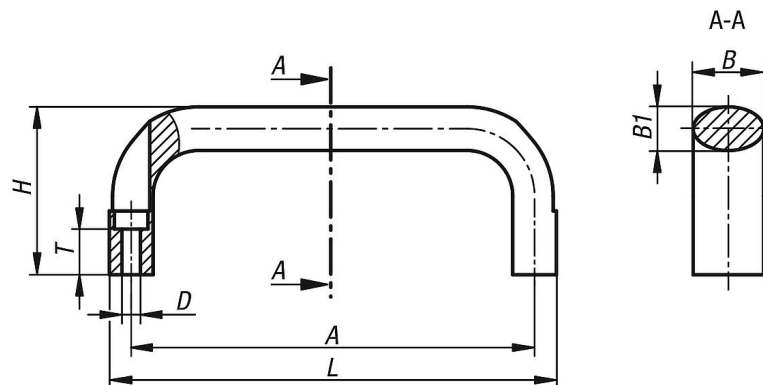
Assembly:

From the front.

Accessory:

Use ISO 4762-M5/M6 cap screws for mounting the handles.

Drawings



Overview of items

Order No.	Main colour	A	B	B1	D	H	L	T	Load capacity N
K0204.11000105	black powder-coated	100	21	13	5,5	50	113	13,6	1000
K0204.11120105	black powder-coated	112	21	13	5,5	50	125	13,6	1000
K0204.11120106	black powder-coated	112	25	17	6,6	55	129	11	1000
K0204.11200105	black powder-coated	120	21	13	5,5	50	133	13,6	1000
K0204.11200106	black powder-coated	120	25	17	6,6	55	137	11	1000
K0204.11280105	black powder-coated	128	21	13	5,5	50	141	13,6	1000
K0204.11280106	black powder-coated	128	25	17	6,6	55	145	11	1000
K0204.11600105	black powder-coated	160	21	13	5,5	50	173	13,6	1000
K0204.11600106	black powder-coated	160	25	17	6,6	55	177	11	1000
K0204.11800106	black powder-coated	180	25	17	6,6	55	197	11	1000
K0204.11002705	red RAL3003 powder-coated	100	21	13	5,5	50	113	13,6	1000
K0204.11122705	red RAL3003 powder-coated	112	21	13	5,5	50	125	13,6	1000
K0204.11122706	red RAL3003 powder-coated	112	25	17	6,6	55	129	11	1000
K0204.11202705	red RAL3003 powder-coated	120	21	13	5,5	50	133	13,6	1000
K0204.11202706	red RAL3003 powder-coated	120	25	17	6,6	55	137	11	1000
K0204.11282705	red RAL3003 powder-coated	128	21	13	5,5	50	141	13,6	1000
K0204.11282706	red RAL3003 powder-coated	128	25	17	6,6	55	145	11	1000
K0204.11602705	red RAL3003 powder-coated	160	21	13	5,5	50	173	13,6	1000
K0204.11602706	red RAL3003 powder-coated	160	25	17	6,6	55	177	11	1000
K0204.11802706	red RAL3003 powder-coated	180	25	17	6,6	55	197	11	1000

