

Wing grips "Miniwing"

Item description/product images



Description

Product description:

Technical freedom played an important role during the development of these small sized wing grips. The result is a miniwing that is far more than a means to an end. It is a rational and comfortable to use operating and working element.

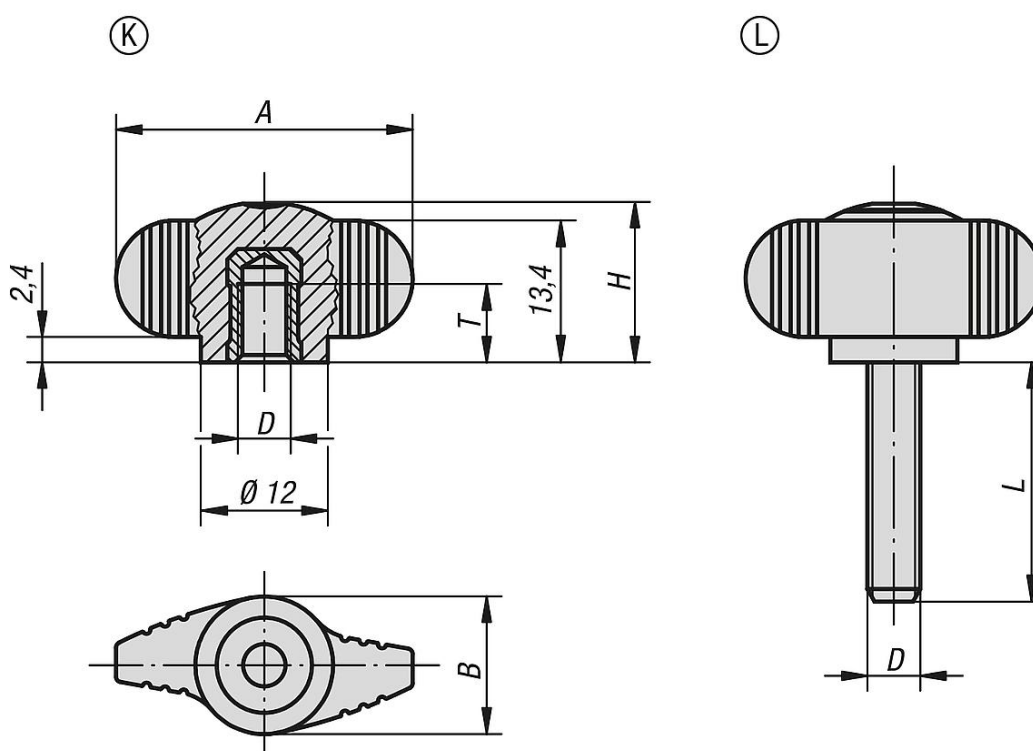
Material:

Grip black grey thermoplastic.
 Bush brass or stainless steel 1.4305.
 Screw steel 5.8 or stainless steel 1.4305.

Version:

Steel trivalent blue passivated.
 Stainless steel, bright.

Drawings



Overview of items

Order No.	Form	Component material	A	B	D	H	T	L
K0274.004	K	brass	28	13	M4	15	6	-
K0274.005	K	brass	28	13	M5	15	7,5	-
K0274.006	K	brass	28	13	M6	15	9	-
K0274.0004	K	stainless steel	28	13	M4	15	6	-
K0274.0005	K	stainless steel	28	13	M5	15	7,5	-
K0274.0006	K	stainless steel	28	13	M6	15	9	-
K0274.004X8	L	steel	28	13	M4	15	-	8
K0274.005X10	L	steel	28	13	M5	15	-	10
K0274.005X15	L	steel	28	13	M5	15	-	15

Wing grips “Miniwing”

Overview of items

Order No.	Form	Component material	A	B	D	H	T	L
K0274.005X20	L	steel	28	13	M5	15	-	20
K0274.006X10	L	steel	28	13	M6	15	-	10
K0274.006X15	L	steel	28	13	M6	15	-	15
K0274.006X20	L	steel	28	13	M6	15	-	20
K0274.006X25	L	steel	28	13	M6	15	-	25
K0274.006X30	L	steel	28	13	M6	15	-	30
K0274.008X20	L	steel	28	13	M8	15	-	20
K0274.008X25	L	steel	28	13	M8	15	-	25
K0274.008X30	L	steel	28	13	M8	15	-	30
K0274.008X40	L	steel	28	13	M8	15	-	40
K0274.0004X8	L	stainless steel	28	13	M4	15	-	8
K0274.0005X10	L	stainless steel	28	13	M5	15	-	10
K0274.0005X15	L	stainless steel	28	13	M5	15	-	15
K0274.0005X20	L	stainless steel	28	13	M5	15	-	20
K0274.0006X10	L	stainless steel	28	13	M6	15	-	10
K0274.0006X15	L	stainless steel	28	13	M6	15	-	15
K0274.0006X20	L	stainless steel	28	13	M6	15	-	20
K0274.0006X25	L	stainless steel	28	13	M6	15	-	25
K0274.0006X30	L	stainless steel	28	13	M6	15	-	30
K0274.0008X20	L	stainless steel	28	13	M8	15	-	20
K0274.0008X25	L	stainless steel	28	13	M8	15	-	25
K0274.0008X30	L	stainless steel	28	13	M8	15	-	30
K0274.0008X40	L	stainless steel	28	13	M8	15	-	40