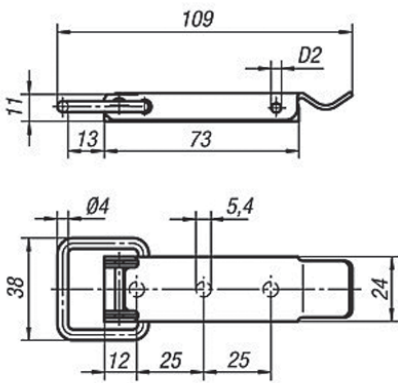


► Light Duty - with a Pulling Latch

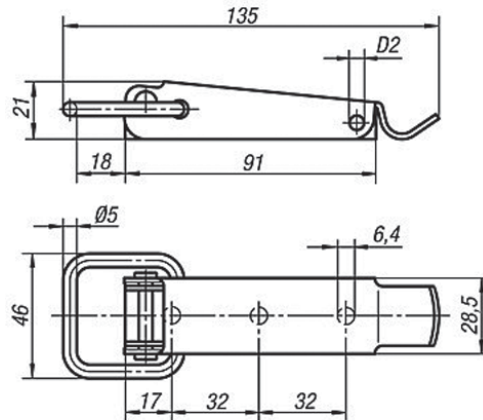


TOGGLE LATCHES

Form A



Form B



TOGGLE LATCHES IN STEEL

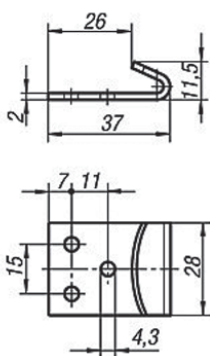
Part No	Form	D2	Holding Force
GH-45.1541091	A	3.2	200Kg
GH-45.2641351	B	3.8	300Kg

TOGGLE LATCHES IN STAINLESS STEEL

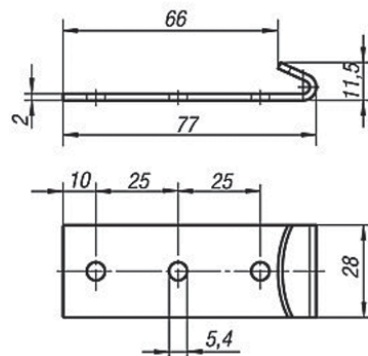
Part No	Form	D2	Holding Force
GH-45.1541092	A	3.2	200Kg
GH-45.2641352	B	3.8	300Kg

LATCH PLATES

Latch Plate - Form A



Latch Plate - Form A



LATCH PLATES IN STEEL

Part No	Form
GH-45.9143371	A
GH-45.9254771	B

LATCH PLATES IN STAINLESS STEEL

Part No	Form
GH-45.9143372	A
GH-45.9254772	B

