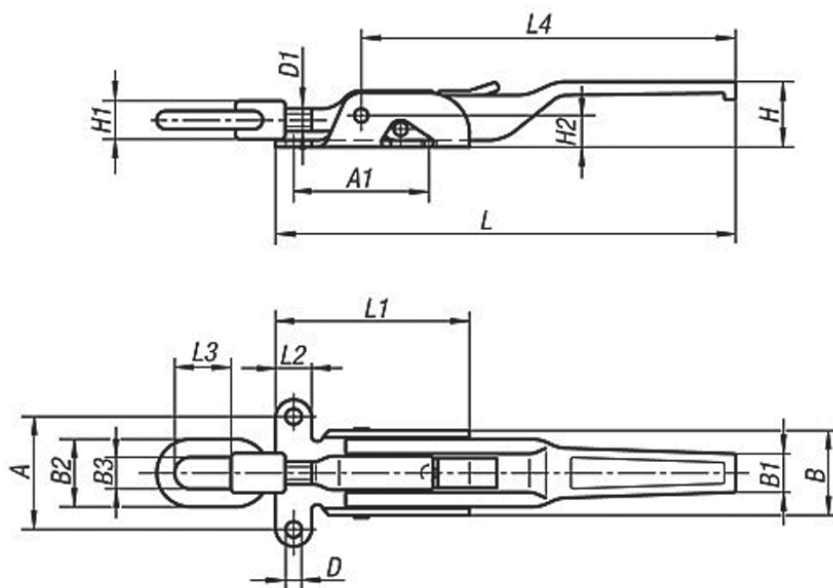


► Heavy Duty - with Adjustable Hook

TOGGLE LATCHES

Form A - standard

**Holding Force: 4000Kg**

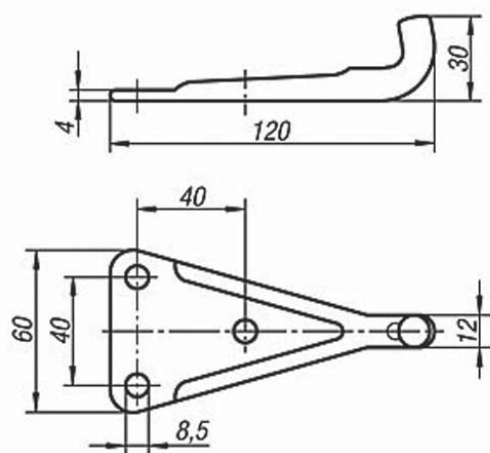
TOGGLE LATCHES IN STEEL

Part No	Form	A	A1	B	B1	B2	B3	D	D1	H	H1	H2	L	L1	L2	L3	L4	Approx weight
GH-52.1702041	A	50	62	37	18	30	14	7	M10	30	17	14	204	86	16	25	165	0.490Kg
GH-52.1852371	A	65	82	50	20	36	15	8.5	M14x1.5	32	20	18	237	104	21	40	190	1.020Kg

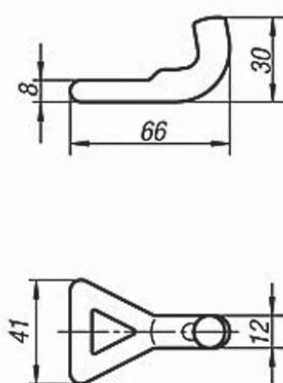
LATCH PLATES

Combine either latch plate with the above toggle latch.

Latch Plate - Form A



Latch Plate - Form B (welded)



LATCH PLATES IN STEEL

Part No	Form	Approx weight
GH-52.91851201	A	0.190Kg
GH-52.92000601	B	0.085Kg