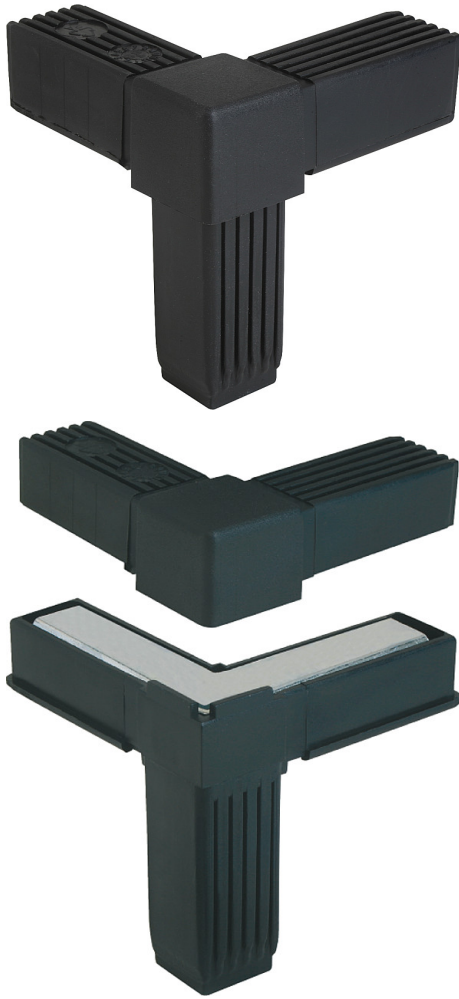


Plug connector angle with outlet

Item description/product images



Description

Material, surface finish:

Polyamide PA, black.

Steel core inlay in steel, galvanized.

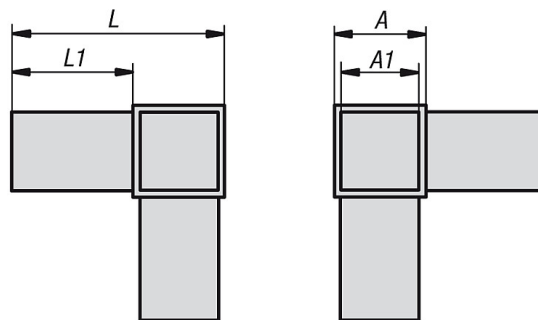
Note:

Plug system without screws. The plug connectors are simply inserted into the corresponding square tube. They can be disassembled and used again.

Accessory:

- Square tubes K0627
- Square tubes with a bridge K0628

Drawings



Overview of items

Order No.	A	A1	L	L1	Suitable for square tubes
K0619.1201512	20	17	56	36	20 x 20 x 1,5
K0619.1251512	25	22	77	52	25 x 25 x 1,5
K0619.1302012	30	26	77	47	30 x 30 x 2

Plug connector angle with outlet

Overview of items
