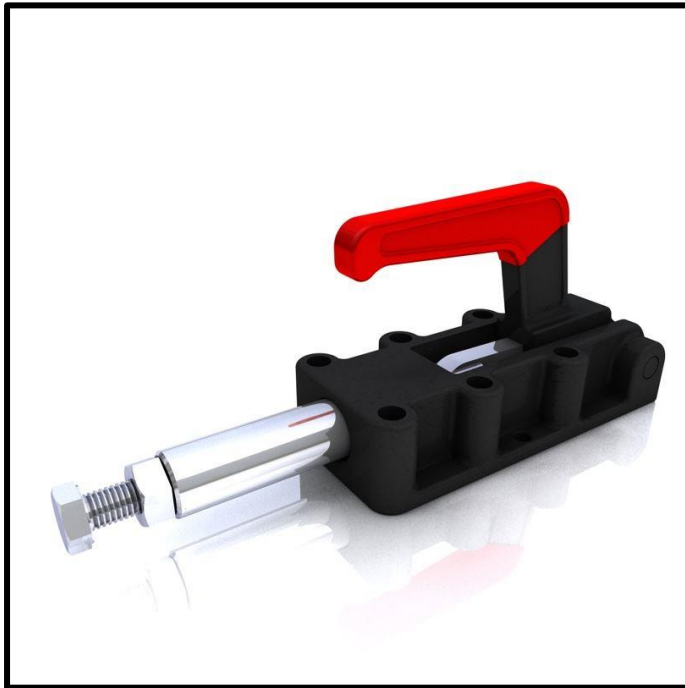


Push-Pull Toggle Clamp

Part No. GH-31200M

GH GoodHand UK



Product Description

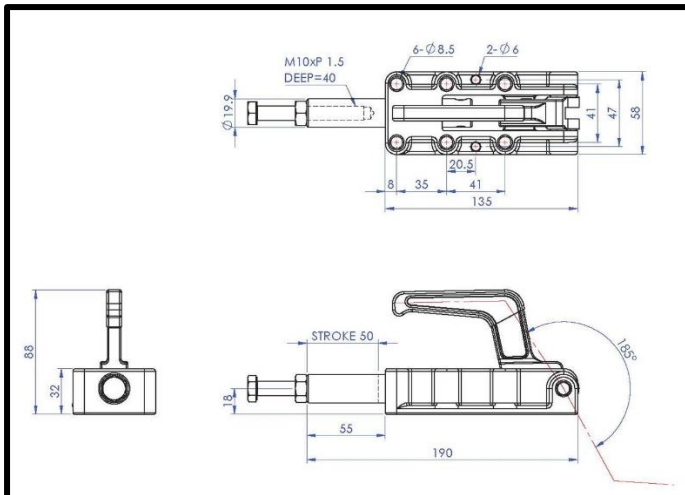
Push Pull Toggle Clamp Plunger
Stroke 50mm Size 1200Kg

Key Features

Overall Height:	88mm
Length:	190mm
Stroke:	50mm
Holding Force:	1200Kg

Other Features

Arm Opens:	185°
Weight:	1.482Kg



Material

Clamp Shaft:	Zinc Plated Mild Steel
Clamp Casting:	Cast Iron
Spindle:	Zinc Plated Mild Steel
Handle:	uPVC

What's In The Bag?

GH-31200M: Toggle Clamp
SA-107515: M10x75mm Zinc Plated Steel Spindle
With Nut

GH GoodHand UK
goodhanduk.co.uk

01908 221 151