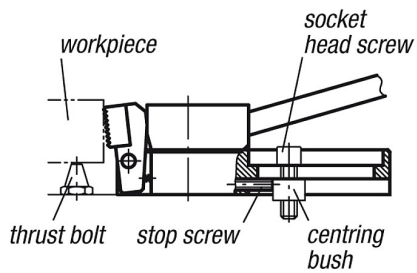


Cam-operated edge clamps adjustable

Item description/product images



Description

Material:

Steel

Surface finish:

Case-hardened with black oxide finish

Note:

Cam type edge clamps are used for rapid clamping, to fasten the workpiece by means of a cam lever effect.

The cam type edge clamp is positioned and fixed with the centring bush and stop screw (see drawing). The stop screw is used to stop the clamp from moving back after the adjustment, by transferring the clamping force directly to the centring bush.

The types K0034.006010, K0034.006015, K0034.006030 and K0034.006035 have 2 round carbide serrations.

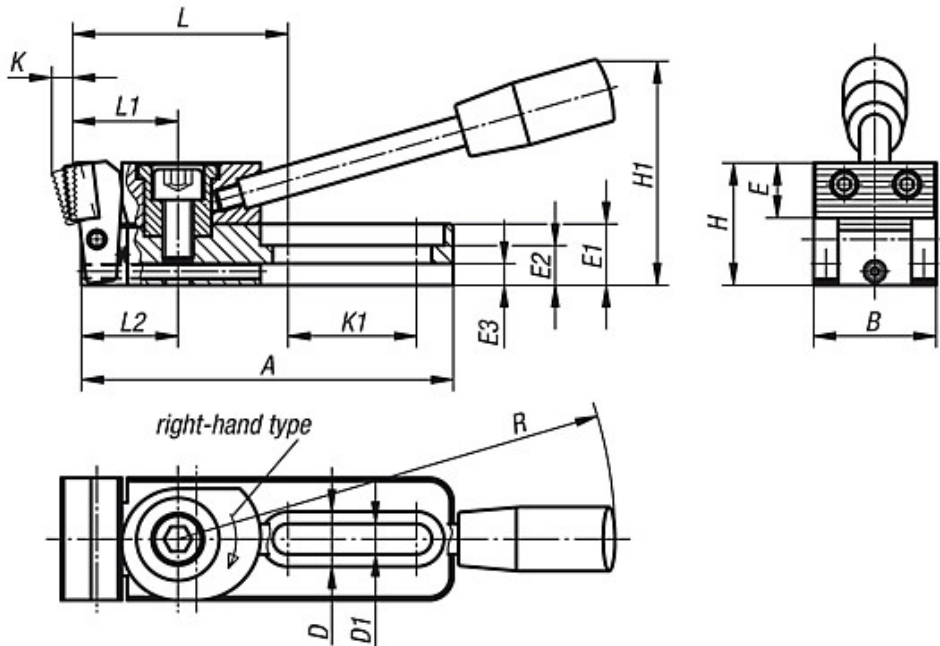
Clamping force:

K0034.006... = 3800 N

K0034.010... = 7200 N

Cam-operated edge clamps adjustable

Drawings

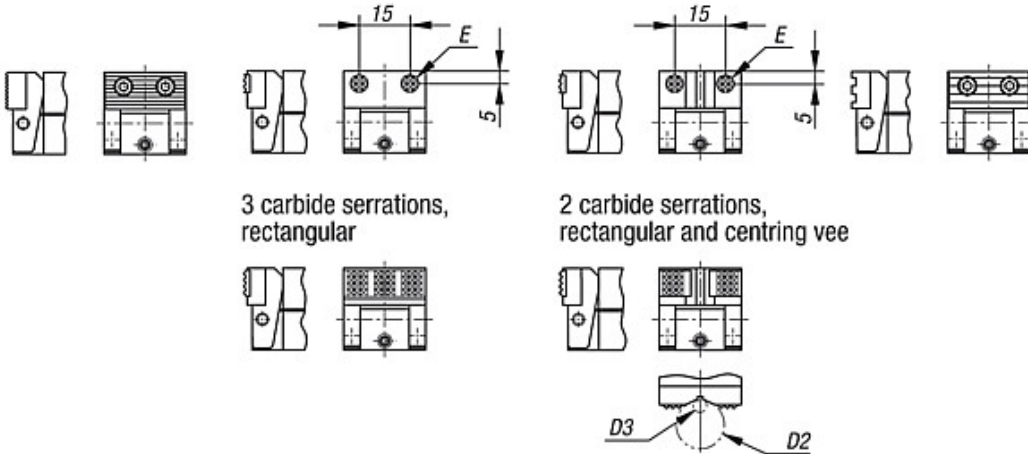


Form A
case-hardened
steel ribbed jaw

Form B
jaw with:
2 carbide serrations,
round

Form C
jaw with:
2 carbide serrations,
round and centring vee

Form D
Delrin ribbed jaw



Overview of items

Order No.	Form	Surface finish	A	B	D	D1	D2 max.	D3 min.	E	E1	E2	E3	H	H1	K	K1	L	L1	L2	R	Clamping force kN	Approx. weight kg
K0034.006005	A	right-hand type	78	25	12	6,2	-	-	11	12	8	4	25	45	4	26	46,5	22	20	110	3,8	0,230
K0034.010005	A	right-hand type	121,5	40	18	10,2	-	-	18	20	13	7	40	74	6	42	71	35	31,5	143	7,2	0,900
K0034.006025	A	left-hand type	78	25	12	6,2	-	-	11	12	8	4	25	45	4	26	46,5	22	20	110	3,8	0,230
K0034.010025	A	left-hand type	121,5	40	18	10,2	-	-	18	20	13	7	40	74	6	42	71	35	31,5	143	7,2	0,900
K0034.006010	B	right-hand type	78	25	12	6,2	-	-	∅8	12	8	4	24	45	3,5	26	46,5	22	20	110	3,8	0,230
K0034.010010	B	right-hand type	121,5	40	18	10,2	-	-	12,7	20	13	7	39	74	5,5	42	73	35	31,5	143	7,2	0,900
K0034.006030	B	left-hand type	78	25	12	6,2	-	-	∅8	12	8	4	24	45	3,5	26	46,5	22	20	110	3,8	0,230
K0034.010030	B	left-hand type	121,5	40	18	10,2	-	-	12,7	20	13	7	39	74	5,5	42	73	35	31,5	143	7,2	0,900
K0034.006015	C	right-hand type	78	25	12	6,2	9,5	2,5	∅8	12	8	4	24	45	3,5	26	46,5	22	20	110	3,8	0,230
K0034.010015	C	right-hand type	121,5	40	18	10,2	27	4,5	12,7	20	13	7	39	74	5,5	42	73	35	31,5	143	7,2	0,900

Cam-operated edge clamps adjustable

Overview of items

Order No.	Form	Surface finish	A	B	D	D1	D2 max.	D3 min.	E	E1	E2	E3	H	H1	K	K1	L	L1	L2	R	Clamping force kN	Approx. weight kg
K0034.006035	C	left-hand type	78	25	12	6,2	9,5	2,5	∅ 8	12	8	4	24	45	3,5	26	46,5	22	20	110	3,8	0,230
K0034.010035	C	left-hand type	121,5	40	18	10,2	27	4,5	12,7	20	13	7	39	74	5,5	42	73	35	31,5	143	7,2	0,900
K0034.006020	D	right-hand type	78	25	12	6,2	-	-	11	12	8	4	25	45	4,5	26	46,5	22	20	110	3,8	0,230
K0034.010020	D	right-hand type	121,5	40	18	10,2	-	-	18	20	13	7	40	74	7	42	70,5	35	31,5	143	7,2	0,900
K0034.006040	D	left-hand type	78	25	12	6,2	-	-	11	12	8	4	25	45	4,5	26	46,5	22	20	110	3,8	0,230
K0034.010040	D	left-hand type	121,5	40	18	10,2	-	-	18	20	13	7	40	74	7	42	70,5	35	31,5	143	7,2	0,900