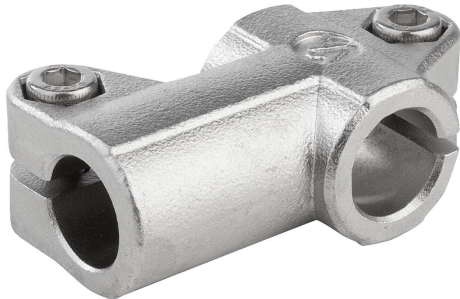


Tube clamps T-angle stainless steel

Item description/product images



Description

Material:

Investment cast 1.4308 stainless steel.

ISO 4762 cap screw and ISO 4032 hex nut, stainless steel.

From $\varnothing 30$ mm ISO 4017 hex head bolt, stainless steel.

Version:

Electropolished.

On request:

Clamping levers for tightening.

Accessory:

- Round and square tubes K0493

Drawings

