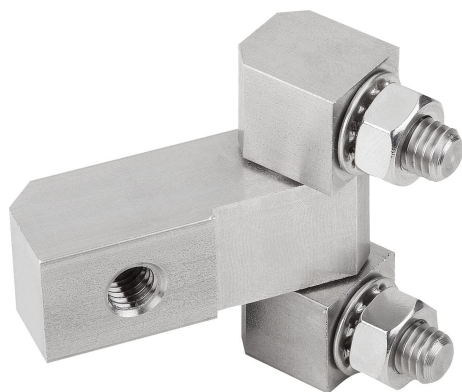


Block hinges with fastening nuts, long version

Item description/product images



Description

Material:

Steel.
Stainless steel 1.4305.
Stainless steel A4 1.4401.

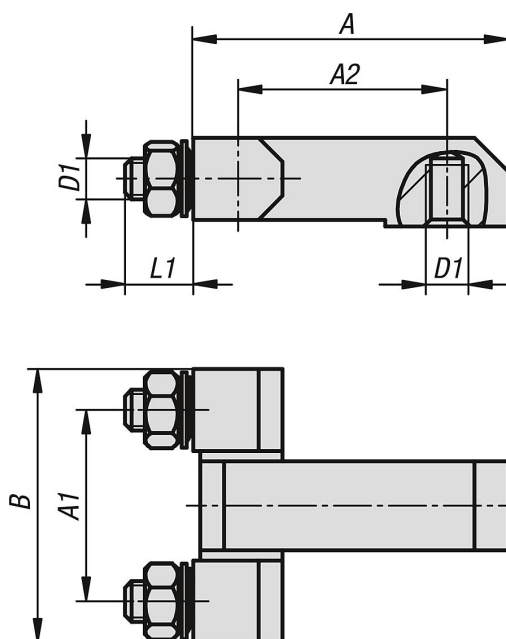
Version:

Steel electro zinc-plated.
Stainless steel bright.

Note:

Block hinges with fastening nuts and extended middle section for inset doors.
Mounted with nuts (M6 or M8) from inside.
The hinge can be mounted left or right. The opening angle is 180°.
Supplied unassembled. Fastening nuts and washers are supplied.

Drawings



Overview of items

Block hinges with fastening nuts, long version

Order No.	Main material	Steel code	A1	A2	B	D1	L1 length
K1143.0630028	steel	-	28	30	40	M6	10
K1143.0829035	steel	-	35	29	51	M8	14
K1143.10630028	stainless steel	1.4305	28	30	40	M6	10
K1143.10829035	stainless steel	1.4305	35	29	51	M8	14
K1143.20630028	stainless steel	1.4401	28	30	40	M6	10
K1143.20829035	stainless steel	1.4401	35	29	51	M8	14