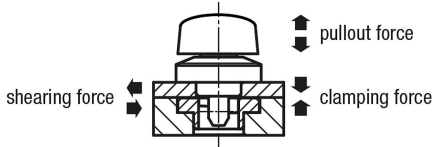


# Quarter-turn clamp locks stainless steel Knob plastic or stainless steel

## Item description/product images



### Description

**Material:**

Housing stainless steel.  
Pin stainless steel  
Twist knob stainless steel or PA thermoplastic (polyamide).

**Version:**

Housing bright.  
Pin bright.  
PA twist knob reinforced black fibreglass.  
Stainless steel twist knob bright.

**Note:**

M2 or M3 mounting screws are supplied.  
Form A mounting option for plate thickness 6 or 12 mm.  
Form B mounting option for plate thickness 12 to 20 mm.

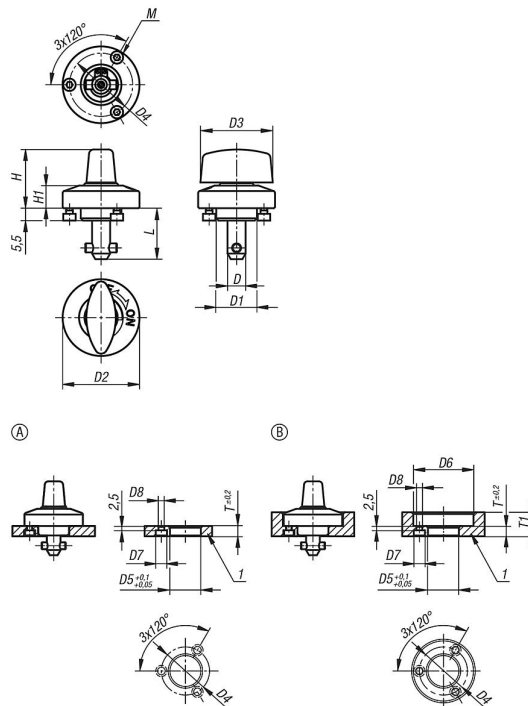
**Accessory:**

Clamping plates K1062

**Drawing reference:**

1) plate

## Drawings



## Overview of items

### Quarter-turn clamp locks stainless steel, knob plastic or stainless steel

## Quarter-turn clamp locks stainless steel Knob plastic or stainless steel

### Overview of items

Order No.	Component material	D	L	D1	D2	D3	D4	H	H1	M	D5	D6	D7	D8	T	T1	Clamping force N	Shearing force kN	pullout force F kN	Temperature resistance
<b>K1061.516</b>	plastic	5	15,5	14	25	20	21	19	6,5	M2x3	14	26	4,4	2,4	6	6-10	60	1,8	1,2	≤130 °C
<b>K1061.817</b>	plastic	8	17	18	34	32	28	26	10	M3x4	18	35	6,5	3,4	6	6-14	90	3,2	2,6	≤130 °C
<b>K1061.823</b>	plastic	8	23	18	34	32	28	26	10	M3x4	18	35	6,5	3,4	12	12-20	90	3,2	2,6	≤130 °C
<b>K1061.5161</b>	stainless steel	5	15,5	14	25	20	21	19	6,5	M2x3	14	26	4,4	2,4	6	6-10	60	1,8	1,2	≤200 °C
<b>K1061.8171</b>	stainless steel	8	17	18	34	32	28	25,5	10	M3x4	18	35	6,5	3,4	6	6-14	90	3,2	2,6	≤200 °C
<b>K1061.8231</b>	stainless steel	8	23	18	34	32	28	25,5	10	M3x4	18	35	6,5	3,4	12	12-20	90	3,2	2,6	≤200 °C