

Hinges aluminium

Item description/product images



Description

Material:

Die-cast aluminium.
Hinge pin stainless steel.

Version:

Hinge silver powder coated.
Axle bright.

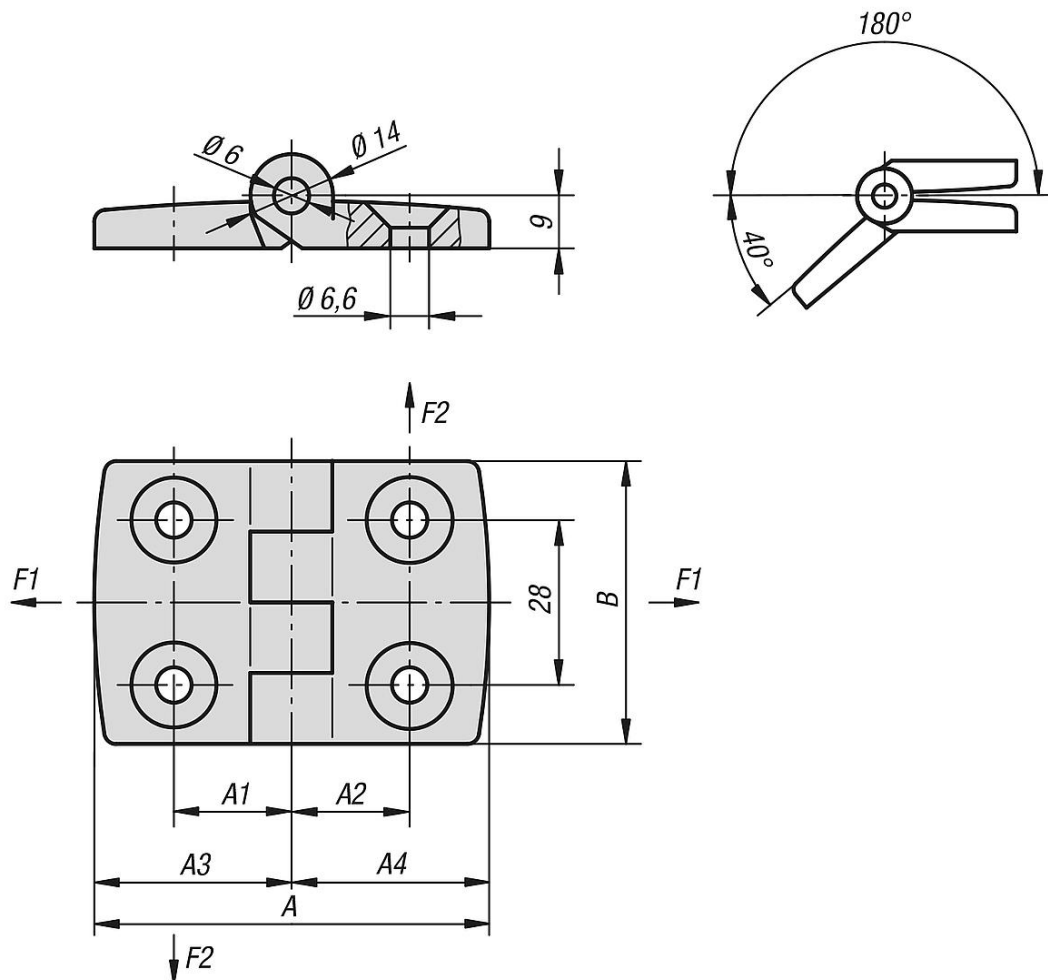
Note:

Hinges for panel elements and aluminium profiles, non lift-off.
The hinges can be fitted with a plastic spacer on the hinge pin.

On request:

Hinges with guide tabs for aluminium profiles (slots 5, 6, 8, 10, 12 and 14).
Unequal leaf combinations.

Drawings



Overview of items

Hinges aluminium

Overview of items

Hinges aluminium

Order No.	A	A1	A2	A3	A4	B	F1 max. kN	F2 max. kN
K0580.251515	52	15	15	26	26	48	0,275	0,215
K0580.301818	59	17,5	17,5	29,5	29,5	48	0,325	0,225
K0580.352020	72	20	20	36	36	48	0,325	0,225
K0580.402323	77	22,5	22,5	38,5	38,5	48	0,4	0,25
K0580.452525	87	25	25	43,5	43,5	48	0,4	0,25
K0580.502828	97	27,5	27,5	48,5	48,5	48	0,4	0,25
K0580.603333	115	32,5	32,5	57,5	57,5	48	0,4	0,1