

Double cam levers

Item description/product images



Description

Material:

Tempered steel 1.7220, plastic ball

Surface finish:

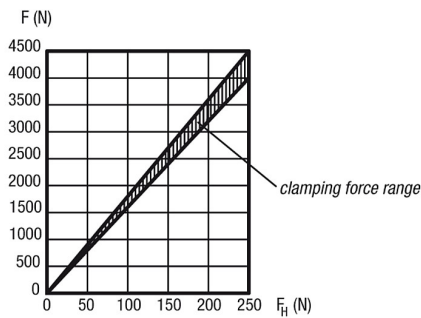
Heat-treated and black oxide finish

Note:

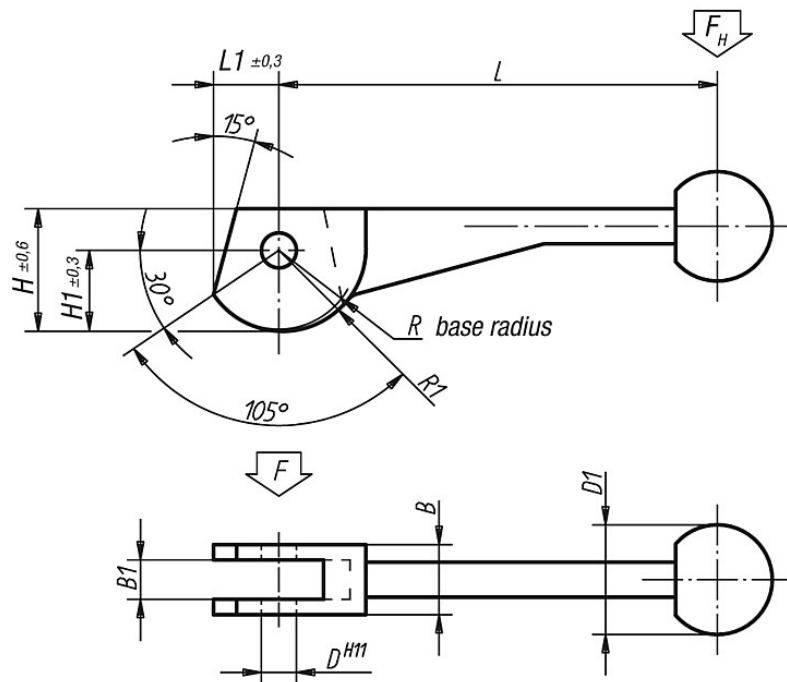
Suitable hinge pin, see K0007.

The cam lever is an eccentric lever that moves along a logarithmic spiral. Its clamping properties are even over the entire contact surface of the cam.

Force diagram



Drawings



Overview of items

Order No.	L	L1	B	B1	H	H1	D	D1	R	R1	Approx. weight kg
K0009.08	100	14,9	16	9	28	18,5	8	25	17,5	19,2	0,100
K0009.10	120	18,7	20	12	35	23,3	10	30	21,5	24	0,205
K0009.12	138,5	24,3	25	14	44	30,2	12	30	28	31,2	0,330

Double cam levers

Overview of items
