

## Quarter-turn locks stainless steel with T-grip

### Item description/product images



### Description

#### Material:

Grip 1.4301 stainless steel.  
Housing and nut 1.4305 stainless steel.  
Tongue 1.4301 stainless steel.

#### Version:

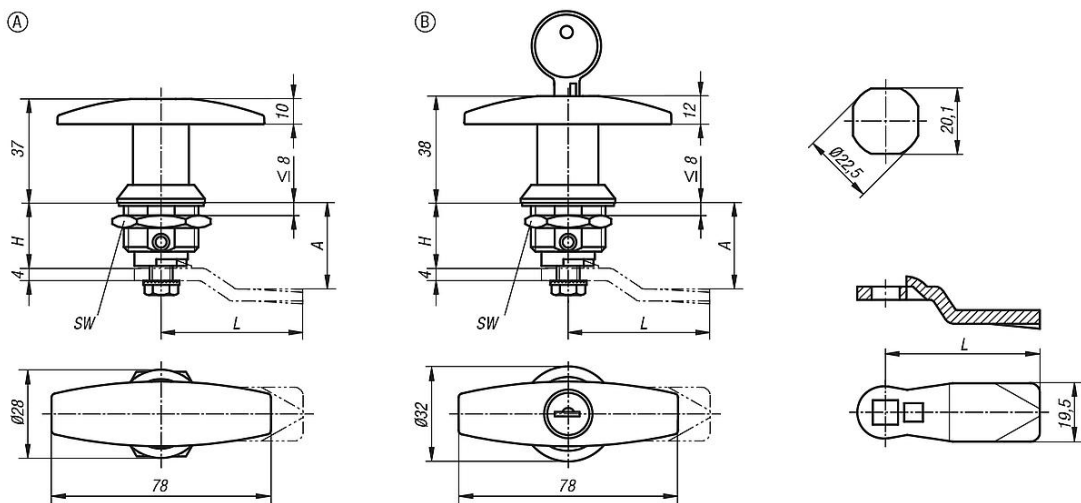
Bright.

#### Note:

Quarter-turn lock with T-grip. For right or left mounting with 90° closing. The quarter-turn lock can be installed pre-assembled. Supplied with standard stainless-steel nut. The lockable quarter-turn locks are each supplied with 2 keys. Rating IP65. Please order required tongue version separately. Every tongue can be combined with this housing.

The key can be removed in both the closed and open position. The cylinder locks have a single-key system i.e. the same key works in all locks.

### Drawings



### Overview of items

#### Quarter-turn locks, stainless steel with T-grip

Order No.	Form	Actuation	H	SW
K1109.1186	A	T-Grip	18	27
K1109.2186	B	lockable T-grip	18	27

#### Tongue for quarter-turn lock

Order No.	A for housing length H=18	L
K1114.245X180	18	45
K1114.245X200	20	45
K1114.245X240	24	45
K1114.245X280	28	45

## Quarter-turn locks stainless steel with T-grip

### Overview of items

Order No.	A for housing length H=18	L
K1114.245X320	32	45
K1114.245X340	34	45
K1114.245X360	36	45
K1114.245X380	38	45
K1114.245X400	40	45
K1114.245X420	42	45