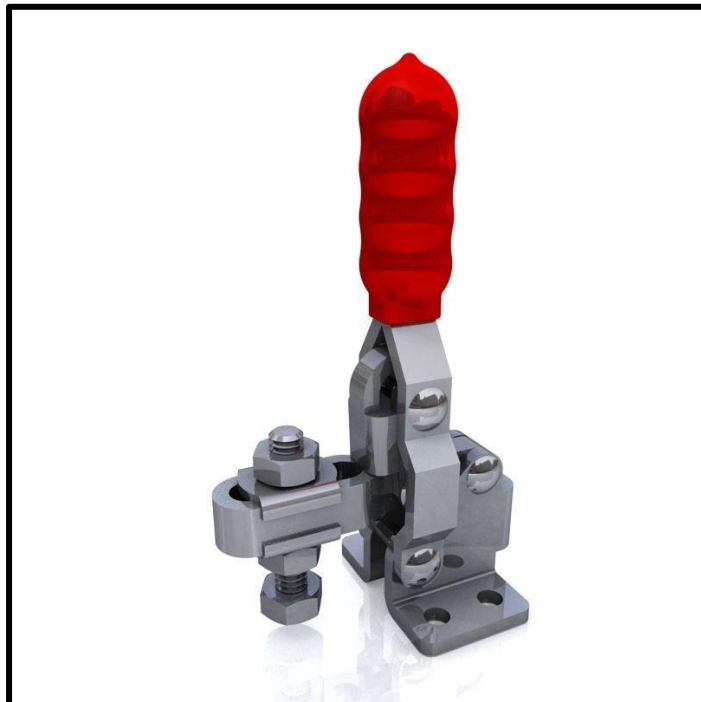


# Vertical Toggle Clamp

Part No. GH-12050-USS



## Product Description

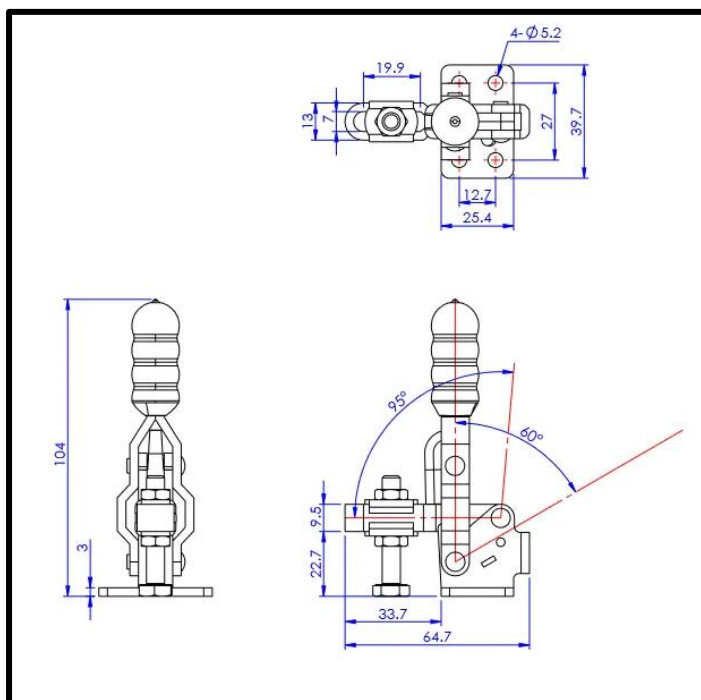
Stainless Steel Vertical Toggle  
Clamp Flat Base Size 91daN

## Key Features

Overall Height:	104mm
Underarm Height:	22.7mm
Arm Length:	33.7mm
Holding Force:	91daN

## Other Features

Arm Opens:	95°
Handle Opens:	60°
Weight:	0.17Kg



## Material

Toggle Clamp:	304 Stainless Steel
Spindle:	304 Stainless Steel
Handle:	uPVC

## What's In The Bag?

GH-12050-USS:	Toggle Clamp
FW-140-SS:	2x Flanged Washers for M6 Spindle
SA-064010-SS:	M6x40mm Stainless Spindle With Nuts