

Joint clamps without toothing, plastic

Item description/product images



Description

Material, surface finish:

Black thermoplastic; socket head screw to DIN 7984 and hexagon nut to DIN 985 in galvanized steel

Note:

Joint clamps can be continuously shifted by 180°.

The basic size for round tubes is Ø18 mm or Ø30 mm. If smaller tubes are to be clamped or converted from round to square tubes, these can be adjusted to the required fitting by means of reducing bushes K0492.

On request:

Clamp levers in plastic for fixing.

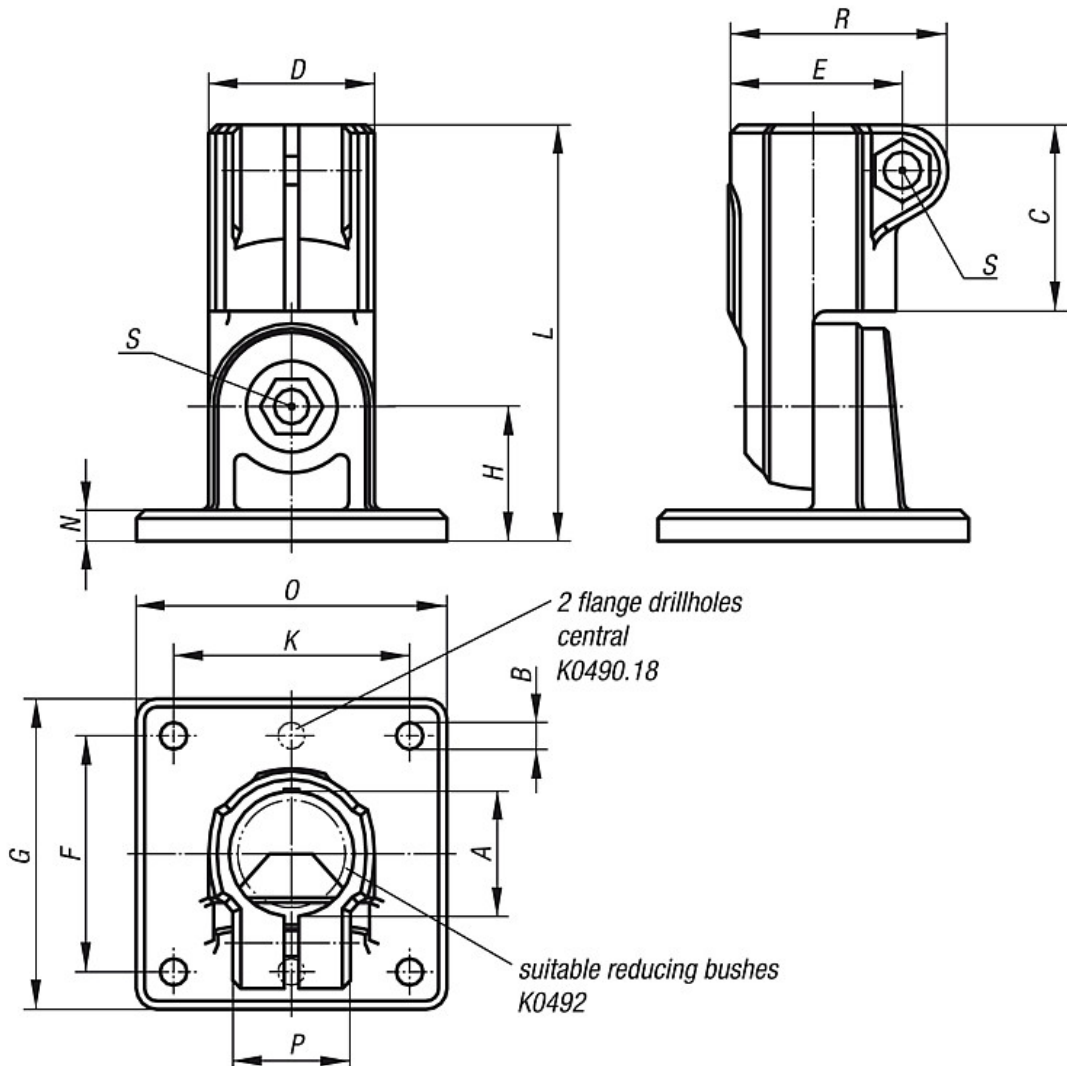
Accessory:

- Reducing bushes K0492
- Round and square tubes K0493



Joint clamps without toothing, plastic

Drawings



Overview of items

Order No.	A	B	C	D	E	F	G	H	K	L	N	O	P	R	S	Approx. weight kg
K0490.18	18	5,3 (2x)	30	25	26,5	40	50	20	-	65	5	35	21	34	M6x18	0,055
K0490.30	30	6,5 (4x)	45	40	41,5	60	75	32,5	60	100,5	7,5	75	28,5	52,5	M8x25	0,154