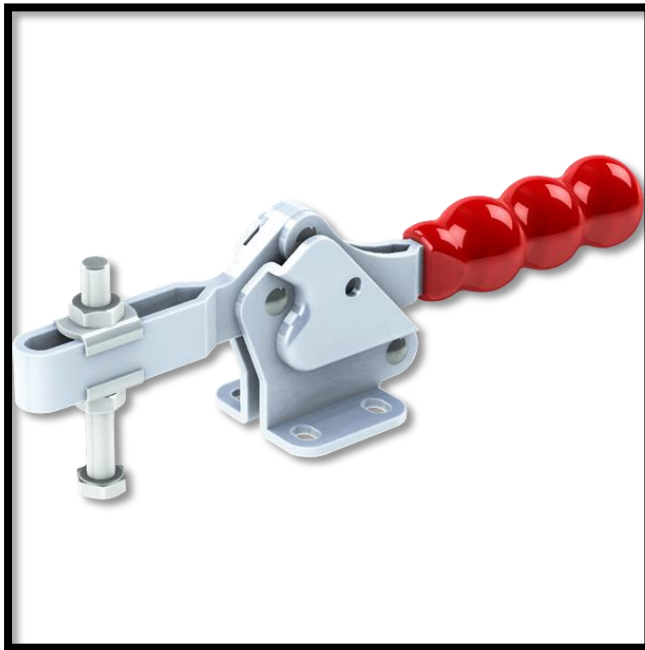


Horizontal Toggle Clamp

Part No. GH-22502-BSS



Product Description

Stainless Steel Horizontal Clamp Flat Base
Size 250daN

Key Features

Overall Height:	66.5mm
Underarm Height:	34mm
Arm Length	79mm
Holding Force	250daN

Other Features

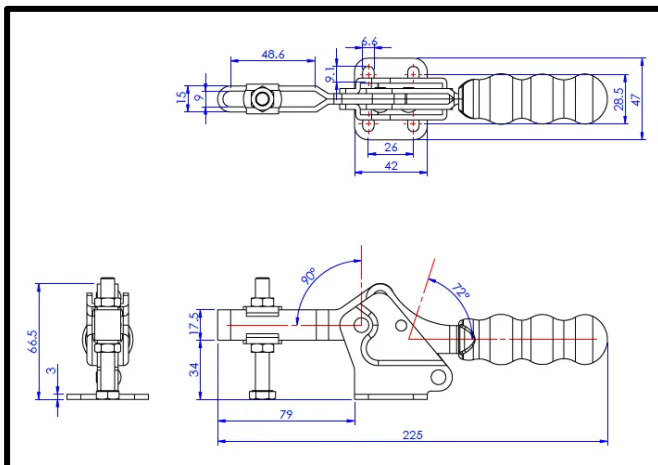
Arm Opens:	90°
Handle Opens:	72°
Weight:	0.44Kg

Material

Toggle Clamp:	Stainless Steel
Spindle:	Stainless Steel
Handle:	uPVC

Whats In The Bag?

Toggle Clamp:	GH-22502-BSS
Spindle:	SA-086512-SS
2x Flanged Washers:	FW-516-SS



goodhanduk.co.uk

01908 221 151