

## Handwheels with cylindrical revolving grip

### Item description/product images



### Description

#### Material, surface finish:

Anthracite grey thermoplastic.

Steel parts black oxide finish.

#### Note:

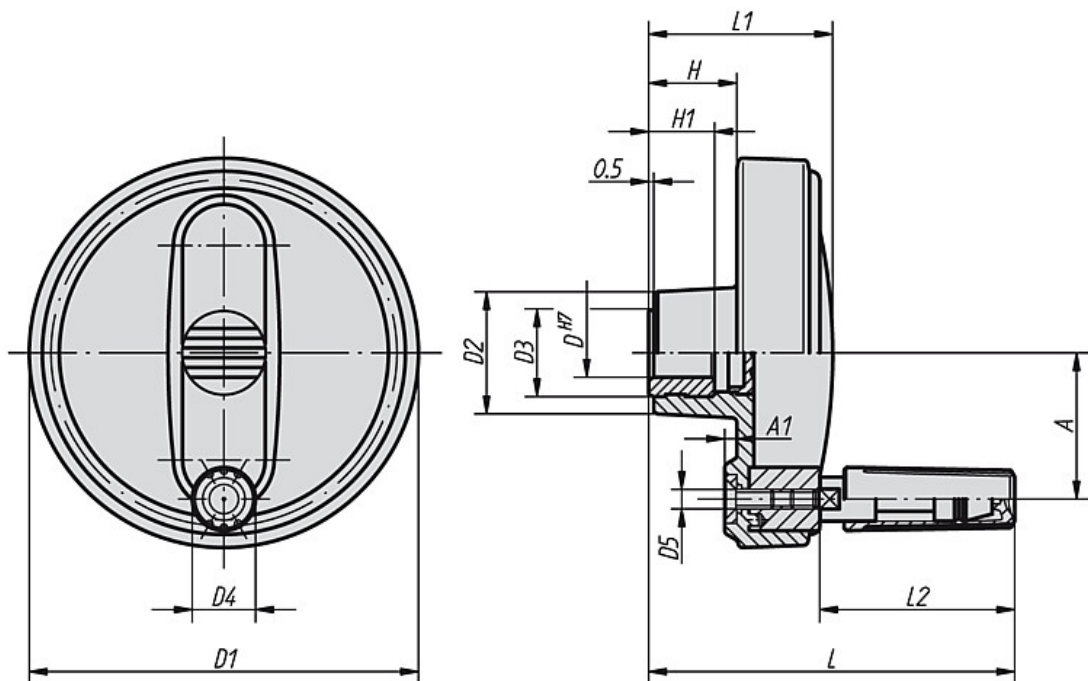
The hub cover and the cylindrical revolving grip are supplied unassembled. In order to assemble the grip, the axis must be screwed into the receiving hole.

The handwheels can be secured axially to the shaft via feather connection by cross-pinning or with a socket head screw to DIN 6912 and a washer to DIN 7349.

Assembly example see K0256.

# NG

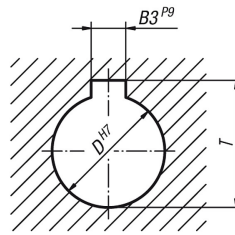
### Drawings



# Handwheels with cylindrical revolving grip

## Drawings

hub slot according to  
DIN 6885-1



## Overview of items

Order No. hub without slot	Order No. hub with slot	Size	D	D1	D2	D3	D4	D5	A	A1	H	H1	L	L1	L2	B3	T	Approx. weight kg
K0257.108008	K0257.10800802	1	8	80	25	19	13	M4	30	2,5	17,5	13	75	37,5	40	-/2	-/9	0,101
K0257.108010	K0257.10801003	1	10	80	25	19	13	M4	30	2,5	17,5	13	75	37,5	40	-/3	-/11,4	0,101
K0257.108012	K0257.10801204	1	12	80	25	19	13	M4	30	2,5	17,5	13	75	37,5	40	-/4	-/13,8	0,101
K0257.210010	K0257.21001003	2	10	100	28	19	16	M5	38	3	20	13	90	44	49,5	-/3	-/11,4	0,178
K0257.210012	K0257.21001204	2	12	100	28	19	16	M5	38	3	20	13	90	44	49,5	-/4	-/13,8	0,178
K0257.312512	K0257.31251204	3	12	125	35	25	20	M6	47,5	4	23,5	18,5	109	53	60	-/4	-/13,8	0,318
K0257.312514	K0257.31251405	3	14	125	35	25	20	M6	47,5	4	23,5	18,5	109	53	60	-/5	-/16,3	0,318
K0257.312516	K0257.31251605	3	16	125	35	25	20	M6	47,5	4	23,5	18,5	109	53	60	-/5	-/18,3	0,318
K0257.416014	K0257.41601405	4	14	160	45	25	25	M8	62	5,6	28	18,5	144	64,5	83,5	-/5	-/16,3	0,636
K0257.416016	K0257.41601605	4	16	160	45	25	25	M8	62	5,6	28	18,5	144	64,5	83,5	-/5	-/18,3	0,636