

## Handwheels DIN 950, aluminium

### Item description/product images



### Description

#### Material:

Handwheel aluminium.

Fixed grip aluminium, centre pin black oxidised steel.

Revolving grip aluminium, centre pin trivalent blue passivated steel.

#### Version:

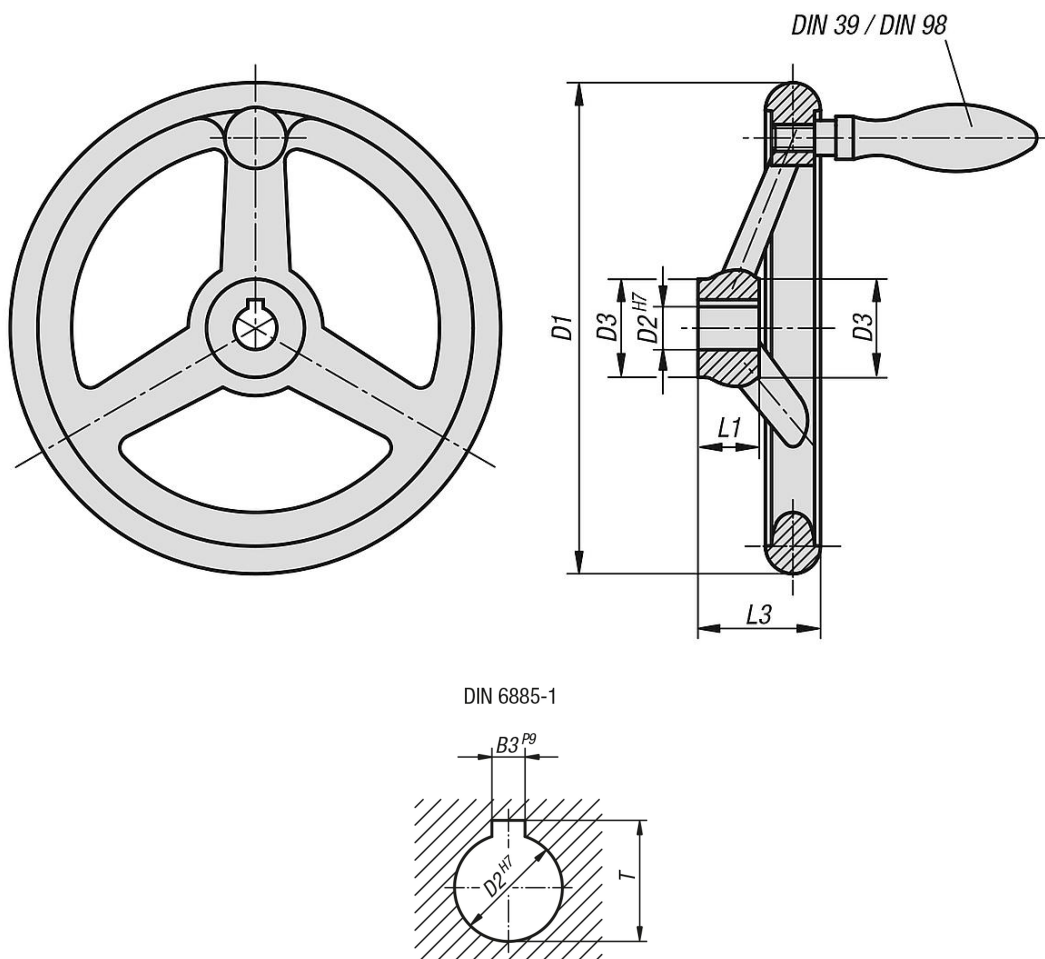
Wheel rim turned and polished.

Radial and axial run-out of rim < IT 12.

#### On request:

Hubs with square socket or powder-coated handwheels.

### Drawings



### Overview of items

#### Handwheels DIN 950 aluminium, without grip

## Handwheels DIN 950, aluminium

## Overview of items

| Order No.     | Version 1             | D1  | D2   | D3 | L1 | L3 | B3 | T    | No. of spokes | fixed grip<br>DIN 39<br>Form E | revolving grip<br>DIN 98 Form E |
|---------------|-----------------------|-----|------|----|----|----|----|------|---------------|--------------------------------|---------------------------------|
| K0160.0080X10 | reamed hole           | 80  | 10H7 | 25 | 16 | 29 | -  | -    | 3             | -                              | -                               |
| K0160.0080X12 | reamed hole           | 80  | 12H7 | 25 | 16 | 29 | -  | -    | 3             | -                              | -                               |
| K0160.0100X10 | reamed hole           | 100 | 10H7 | 29 | 17 | 33 | -  | -    | 3             | -                              | -                               |
| K0160.0100X12 | reamed hole           | 100 | 12H7 | 29 | 17 | 33 | -  | -    | 3             | -                              | -                               |
| K0160.0125X12 | reamed hole           | 125 | 12H7 | 31 | 18 | 36 | -  | -    | 3             | -                              | -                               |
| K0160.0125X14 | reamed hole           | 125 | 14H7 | 31 | 18 | 36 | -  | -    | 3             | -                              | -                               |
| K0160.0140X14 | reamed hole           | 140 | 14H7 | 36 | 19 | 39 | -  | -    | 3             | -                              | -                               |
| K0160.0140X16 | reamed hole           | 140 | 16H7 | 36 | 19 | 39 | -  | -    | 3             | -                              | -                               |
| K0160.0160X14 | reamed hole           | 160 | 14H7 | 36 | 20 | 40 | -  | -    | 3             | -                              | -                               |
| K0160.0160X16 | reamed hole           | 160 | 16H7 | 36 | 20 | 40 | -  | -    | 3             | -                              | -                               |
| K0160.0180X16 | reamed hole           | 180 | 16H7 | 37 | 22 | 43 | -  | -    | 3             | -                              | -                               |
| K0160.0180X18 | reamed hole           | 180 | 18H7 | 37 | 22 | 43 | -  | -    | 3             | -                              | -                               |
| K0160.0200X18 | reamed hole           | 200 | 18H7 | 43 | 24 | 45 | -  | -    | 3             | -                              | -                               |
| K0160.0200X22 | reamed hole           | 200 | 22H7 | 43 | 24 | 45 | -  | -    | 3             | -                              | -                               |
| K0160.0250X22 | reamed hole           | 250 | 22H7 | 49 | 28 | 50 | -  | -    | 5             | -                              | -                               |
| K0160.0250X26 | reamed hole           | 250 | 26H7 | 49 | 28 | 50 | -  | -    | 5             | -                              | -                               |
| K0160.0315X26 | reamed hole           | 315 | 26H7 | 54 | 33 | 56 | -  | -    | 5             | -                              | -                               |
| K0160.0315X30 | reamed hole           | 315 | 30H7 | 54 | 33 | 56 | -  | -    | 5             | -                              | -                               |
| K0160.0400X30 | reamed hole           | 400 | 30H7 | 65 | 38 | 63 | -  | -    | 5             | -                              | -                               |
| K0160.0400X34 | reamed hole           | 400 | 34H7 | 65 | 38 | 63 | -  | -    | 5             | -                              | -                               |
| K0160.0500X34 | reamed hole           | 500 | 34H7 | 79 | 45 | 72 | -  | -    | 5             | -                              | -                               |
| K0160.0500X40 | reamed hole           | 500 | 40H7 | 79 | 45 | 72 | -  | -    | 5             | -                              | -                               |
| K0160.1080X10 | reamed hole with slot | 80  | 10H7 | 25 | 16 | 29 | 3  | 11,4 | 3             | -                              | -                               |
| K0160.1080X12 | reamed hole with slot | 80  | 12H7 | 25 | 16 | 29 | 4  | 13,8 | 3             | -                              | -                               |
| K0160.1100X10 | reamed hole with slot | 100 | 10H7 | 29 | 17 | 33 | 3  | 11,4 | 3             | -                              | -                               |
| K0160.1100X12 | reamed hole with slot | 100 | 12H7 | 29 | 17 | 33 | 4  | 13,8 | 3             | -                              | -                               |
| K0160.1125X12 | reamed hole with slot | 125 | 12H7 | 31 | 18 | 36 | 4  | 13,8 | 3             | -                              | -                               |
| K0160.1125X14 | reamed hole with slot | 125 | 14H7 | 31 | 18 | 36 | 5  | 16,3 | 3             | -                              | -                               |
| K0160.1140X14 | reamed hole with slot | 140 | 14H7 | 36 | 19 | 39 | 5  | 16,3 | 3             | -                              | -                               |
| K0160.1140X16 | reamed hole with slot | 140 | 16H7 | 36 | 19 | 39 | 5  | 18,3 | 3             | -                              | -                               |
| K0160.1160X14 | reamed hole with slot | 160 | 14H7 | 36 | 20 | 40 | 5  | 16,3 | 3             | -                              | -                               |
| K0160.1160X16 | reamed hole with slot | 160 | 16H7 | 36 | 20 | 40 | 5  | 18,3 | 3             | -                              | -                               |
| K0160.1180X16 | reamed hole with slot | 180 | 16H7 | 37 | 22 | 43 | 5  | 18,3 | 3             | -                              | -                               |
| K0160.1180X18 | reamed hole with slot | 180 | 18H7 | 37 | 22 | 43 | 6  | 20,8 | 3             | -                              | -                               |
| K0160.1200X18 | reamed hole with slot | 200 | 18H7 | 43 | 24 | 45 | 6  | 20,8 | 3             | -                              | -                               |
| K0160.1200X22 | reamed hole with slot | 200 | 22H7 | 43 | 24 | 45 | 6  | 24,8 | 3             | -                              | -                               |
| K0160.1250X22 | reamed hole with slot | 250 | 22H7 | 49 | 28 | 50 | 6  | 24,8 | 5             | -                              | -                               |
| K0160.1250X26 | reamed hole with slot | 250 | 26H7 | 49 | 28 | 50 | 8  | 29,3 | 5             | -                              | -                               |
| K0160.1315X26 | reamed hole with slot | 315 | 26H7 | 54 | 33 | 56 | 8  | 29,3 | 5             | -                              | -                               |
| K0160.1315X30 | reamed hole with slot | 315 | 30H7 | 54 | 33 | 56 | 8  | 33,3 | 5             | -                              | -                               |
| K0160.1400X30 | reamed hole with slot | 400 | 30H7 | 65 | 38 | 63 | 8  | 33,3 | 5             | -                              | -                               |
| K0160.1400X34 | reamed hole with slot | 400 | 34H7 | 65 | 38 | 63 | 10 | 37,3 | 5             | -                              | -                               |
| K0160.1500X34 | reamed hole with slot | 500 | 34H7 | 79 | 45 | 72 | 10 | 37,3 | 5             | -                              | -                               |
| K0160.1500X40 | reamed hole with slot | 500 | 40H7 | 79 | 45 | 72 | 12 | 43,3 | 5             | -                              | -                               |
| K0160.2080X10 | reamed hole           | 80  | 10H7 | 25 | 16 | 29 | -  | -    | 3             | ø16 x M6 x 50                  | -                               |
| K0160.2080X12 | reamed hole           | 80  | 12H7 | 25 | 16 | 29 | -  | -    | 3             | ø16 x M6 x 50                  | -                               |
| K0160.2100X10 | reamed hole           | 100 | 10H7 | 29 | 17 | 33 | -  | -    | 3             | ø16 x M6 x 50                  | -                               |
| K0160.2100X12 | reamed hole           | 100 | 12H7 | 29 | 17 | 33 | -  | -    | 3             | ø16 x M6 x 50                  | -                               |
| K0160.2125X12 | reamed hole           | 125 | 12H7 | 31 | 18 | 36 | -  | -    | 3             | ø20 x M8 x 64                  | -                               |
| K0160.2125X14 | reamed hole           | 125 | 14H7 | 31 | 18 | 36 | -  | -    | 3             | ø20 x M8 x 64                  | -                               |
| K0160.2140X14 | reamed hole           | 140 | 14H7 | 36 | 19 | 39 | -  | -    | 3             | ø20 x M8 x 64                  | -                               |
| K0160.2140X16 | reamed hole           | 140 | 16H7 | 36 | 19 | 39 | -  | -    | 3             | ø20 x M8 x 64                  | -                               |
| K0160.2160X14 | reamed hole           | 160 | 14H7 | 36 | 20 | 40 | -  | -    | 3             | ø25 x M10 x 80                 | -                               |
| K0160.2160X16 | reamed hole           | 160 | 16H7 | 36 | 20 | 40 | -  | -    | 3             | ø25 x M10 x 80                 | -                               |
| K0160.2180X16 | reamed hole           | 180 | 16H7 | 37 | 22 | 43 | -  | -    | 3             | ø25 x M10 x 80                 | -                               |
| K0160.2180X18 | reamed hole           | 180 | 18H7 | 37 | 22 | 43 | -  | -    | 3             | ø25 x M10 x 80                 | -                               |
| K0160.2200X18 | reamed hole           | 200 | 18H7 | 43 | 24 | 45 | -  | -    | 3             | ø25 x M10 x 80                 | -                               |
| K0160.2200X22 | reamed hole           | 200 | 22H7 | 43 | 24 | 45 | -  | -    | 3             | ø25 x M10 x 80                 | -                               |
| K0160.2250X22 | reamed hole           | 250 | 22H7 | 49 | 28 | 50 | -  | -    | 5             | ø32 x M12 x 100                | -                               |
| K0160.2250X26 | reamed hole           | 250 | 26H7 | 49 | 28 | 50 | -  | -    | 5             | ø32 x M12 x 100                | -                               |
| K0160.2315X26 | reamed hole           | 315 | 26H7 | 54 | 33 | 56 | -  | -    | 5             | ø32 x M12 x 100                | -                               |

## Overview of items

| Order No.     | Version 1             | D1  | D2   | D3 | L1 | L3 | B3 | T    | No. of spokes | fixed grip<br>DIN 39<br>Form E | revolving grip<br>DIN 98 Form E |
|---------------|-----------------------|-----|------|----|----|----|----|------|---------------|--------------------------------|---------------------------------|
| K0160.2315X30 | reamed hole           | 315 | 30H7 | 54 | 33 | 56 | -  | -    | 5             | ø32 x M12 x 100                | -                               |
| K0160.2400X30 | reamed hole           | 400 | 30H7 | 65 | 38 | 63 | -  | -    | 5             | ø36 x M16 x 112                | -                               |
| K0160.2400X34 | reamed hole           | 400 | 34H7 | 65 | 38 | 63 | -  | -    | 5             | ø36 x M16 x 112                | -                               |
| K0160.2500X34 | reamed hole           | 500 | 34H7 | 79 | 45 | 72 | -  | -    | 5             | ø36 x M16 x 112                | -                               |
| K0160.2500X40 | reamed hole           | 500 | 40H7 | 79 | 45 | 72 | -  | -    | 5             | ø36 x M16 x 112                | -                               |
| K0160.3080X10 | reamed hole with slot | 80  | 10H7 | 25 | 16 | 29 | 3  | 11,4 | 3             | ø16 x M6 x 50                  | -                               |
| K0160.3080X12 | reamed hole with slot | 80  | 12H7 | 25 | 16 | 29 | 4  | 13,8 | 3             | ø16 x M6 x 50                  | -                               |
| K0160.3100X10 | reamed hole with slot | 100 | 10H7 | 29 | 17 | 33 | 3  | 11,4 | 3             | ø16 x M6 x 50                  | -                               |
| K0160.3100X12 | reamed hole with slot | 100 | 12H7 | 29 | 17 | 33 | 4  | 13,8 | 3             | ø16 x M6 x 50                  | -                               |
| K0160.3125X12 | reamed hole with slot | 125 | 12H7 | 31 | 18 | 36 | 4  | 13,8 | 3             | ø20 x M8 x 64                  | -                               |
| K0160.3125X14 | reamed hole with slot | 125 | 14H7 | 31 | 18 | 36 | 5  | 16,3 | 3             | ø20 x M8 x 64                  | -                               |
| K0160.3140X14 | reamed hole with slot | 140 | 14H7 | 36 | 19 | 39 | 5  | 16,3 | 3             | ø20 x M8 x 64                  | -                               |
| K0160.3140X16 | reamed hole with slot | 140 | 16H7 | 36 | 19 | 39 | 5  | 18,3 | 3             | ø20 x M8 x 64                  | -                               |
| K0160.3160X14 | reamed hole with slot | 160 | 14H7 | 36 | 20 | 40 | 5  | 16,3 | 3             | ø25 x M10 x 80                 | -                               |
| K0160.3160X16 | reamed hole with slot | 160 | 16H7 | 36 | 20 | 40 | 5  | 18,3 | 3             | ø25 x M10 x 80                 | -                               |
| K0160.3180X16 | reamed hole with slot | 180 | 16H7 | 37 | 22 | 43 | 5  | 18,3 | 3             | ø25 x M10 x 80                 | -                               |
| K0160.3180X18 | reamed hole with slot | 180 | 18H7 | 37 | 22 | 43 | 6  | 20,8 | 3             | ø25 x M10 x 80                 | -                               |
| K0160.3200X18 | reamed hole with slot | 200 | 18H7 | 43 | 24 | 45 | 6  | 20,8 | 3             | ø25 x M10 x 80                 | -                               |
| K0160.3200X22 | reamed hole with slot | 200 | 22H7 | 43 | 24 | 45 | 6  | 24,8 | 3             | ø25 x M10 x 80                 | -                               |
| K0160.3250X22 | reamed hole with slot | 250 | 22H7 | 49 | 28 | 50 | 6  | 24,8 | 5             | ø32 x M12 x 100                | -                               |
| K0160.3250X26 | reamed hole with slot | 250 | 26H7 | 49 | 28 | 50 | 8  | 29,3 | 5             | ø32 x M12 x 100                | -                               |
| K0160.3315X26 | reamed hole with slot | 315 | 26H7 | 54 | 33 | 56 | 8  | 29,3 | 5             | ø32 x M12 x 100                | -                               |
| K0160.3315X30 | reamed hole with slot | 315 | 30H7 | 54 | 33 | 56 | 8  | 33,3 | 5             | ø32 x M12 x 100                | -                               |
| K0160.3400X30 | reamed hole with slot | 400 | 30H7 | 65 | 38 | 63 | 8  | 33,3 | 5             | ø36 x M16 x 112                | -                               |
| K0160.3400X34 | reamed hole with slot | 400 | 34H7 | 65 | 38 | 63 | 10 | 37,3 | 5             | ø36 x M16 x 112                | -                               |
| K0160.3500X34 | reamed hole with slot | 500 | 34H7 | 79 | 45 | 72 | 10 | 37,3 | 5             | ø36 x M16 x 112                | -                               |
| K0160.3500X40 | reamed hole with slot | 500 | 40H7 | 79 | 45 | 72 | 12 | 43,3 | 5             | ø36 x M16 x 112                | -                               |
| K0160.4080X10 | reamed hole           | 80  | 10H7 | 25 | 16 | 29 | -  | -    | 3             | -                              | ø16 x M6 x 54,5                 |
| K0160.4080X12 | reamed hole           | 80  | 12H7 | 25 | 16 | 29 | -  | -    | 3             | -                              | ø16 x M6 x 54,5                 |
| K0160.4100X10 | reamed hole           | 100 | 10H7 | 29 | 17 | 33 | -  | -    | 3             | -                              | ø16 x M6 x 54,5                 |
| K0160.4100X12 | reamed hole           | 100 | 12H7 | 29 | 17 | 33 | -  | -    | 3             | -                              | ø16 x M6 x 54,5                 |
| K0160.4125X12 | reamed hole           | 125 | 12H7 | 31 | 18 | 36 | -  | -    | 3             | -                              | ø20 x M8 x 67                   |
| K0160.4125X14 | reamed hole           | 125 | 14H7 | 31 | 18 | 36 | -  | -    | 3             | -                              | ø20 x M8 x 67                   |
| K0160.4140X14 | reamed hole           | 140 | 14H7 | 36 | 19 | 39 | -  | -    | 3             | -                              | ø20 x M8 x 67                   |
| K0160.4140X16 | reamed hole           | 140 | 16H7 | 36 | 19 | 39 | -  | -    | 3             | -                              | ø20 x M8 x 67                   |
| K0160.4160X14 | reamed hole           | 160 | 14H7 | 36 | 20 | 40 | -  | -    | 3             | -                              | ø25 x M10 x 83                  |
| K0160.4160X16 | reamed hole           | 160 | 16H7 | 36 | 20 | 40 | -  | -    | 3             | -                              | ø25 x M10 x 83                  |
| K0160.4180X16 | reamed hole           | 180 | 16H7 | 37 | 22 | 43 | -  | -    | 3             | -                              | ø25 x M10 x 83                  |
| K0160.4180X18 | reamed hole           | 180 | 18H7 | 37 | 22 | 43 | -  | -    | 3             | -                              | ø25 x M10 x 83                  |
| K0160.4200X18 | reamed hole           | 200 | 18H7 | 43 | 24 | 45 | -  | -    | 3             | -                              | ø25 x M10 x 83                  |
| K0160.4200X22 | reamed hole           | 200 | 22H7 | 43 | 24 | 45 | -  | -    | 3             | -                              | ø25 x M10 x 83                  |
| K0160.4250X22 | reamed hole           | 250 | 22H7 | 49 | 28 | 50 | -  | -    | 5             | -                              | ø32 x M12 x 105,5               |
| K0160.4250X26 | reamed hole           | 250 | 26H7 | 49 | 28 | 50 | -  | -    | 5             | -                              | ø32 x M12 x 105,5               |
| K0160.4315X26 | reamed hole           | 315 | 26H7 | 54 | 33 | 56 | -  | -    | 5             | -                              | ø32 x M12 x 105,5               |
| K0160.4315X30 | reamed hole           | 315 | 30H7 | 54 | 33 | 56 | -  | -    | 5             | -                              | ø32 x M12 x 105,5               |
| K0160.4400X30 | reamed hole           | 400 | 30H7 | 65 | 38 | 63 | -  | -    | 5             | -                              | ø36 x M16 x 117                 |
| K0160.4400X34 | reamed hole           | 400 | 34H7 | 65 | 38 | 63 | -  | -    | 5             | -                              | ø36 x M16 x 117                 |
| K0160.4500X34 | reamed hole           | 500 | 34H7 | 79 | 45 | 72 | -  | -    | 5             | -                              | ø36 x M16 x 117                 |
| K0160.4500X40 | reamed hole           | 500 | 40H7 | 79 | 45 | 72 | -  | -    | 5             | -                              | ø36 x M16 x 117                 |
| K0160.5080X10 | reamed hole with slot | 80  | 10H7 | 25 | 16 | 29 | 3  | 11,4 | 3             | -                              | ø16 x M6 x 54,5                 |
| K0160.5080X12 | reamed hole with slot | 80  | 12H7 | 25 | 16 | 29 | 4  | 13,8 | 3             | -                              | ø16 x M6 x 54,5                 |
| K0160.5100X10 | reamed hole with slot | 100 | 10H7 | 29 | 17 | 33 | 3  | 11,4 | 3             | -                              | ø16 x M6 x 54,5                 |
| K0160.5100X12 | reamed hole with slot | 100 | 12H7 | 29 | 17 | 33 | 4  | 13,8 | 3             | -                              | ø16 x M6 x 54,5                 |
| K0160.5125X12 | reamed hole with slot | 125 | 12H7 | 31 | 18 | 36 | 4  | 13,8 | 3             | -                              | ø20 x M8 x 67                   |
| K0160.5125X14 | reamed hole with slot | 125 | 14H7 | 31 | 18 | 36 | 5  | 16,3 | 3             | -                              | ø20 x M8 x 67                   |
| K0160.5140X14 | reamed hole with slot | 140 | 14H7 | 36 | 19 | 39 | 5  | 16,3 | 3             | -                              | ø20 x M8 x 67                   |
| K0160.5140X16 | reamed hole with slot | 140 | 16H7 | 36 | 19 | 39 | 5  | 18,3 | 3             | -                              | ø20 x M8 x 67                   |
| K0160.5160X14 | reamed hole with slot | 160 | 14H7 | 36 | 20 | 40 | 5  | 16,3 | 3             | -                              | ø25 x M10 x 83                  |
| K0160.5160X16 | reamed hole with slot | 160 | 16H7 | 36 | 20 | 40 | 5  | 18,3 | 3             | -                              | ø25 x M10 x 83                  |
| K0160.5180X16 | reamed hole with slot | 180 | 16H7 | 37 | 22 | 43 | 5  | 18,3 | 3             | -                              | ø25 x M10 x 83                  |
| K0160.5180X18 | reamed hole with slot | 180 | 18H7 | 37 | 22 | 43 | 6  | 20,8 | 3             | -                              | ø25 x M10 x 83                  |

## Handwheels DIN 950, aluminium

### Overview of items

| Order No.            | Version 1             | D1  | D2   | D3 | L1 | L3 | B3 | T    | No.of spokes | fixed grip<br>DIN 39<br>Form E | revolving grip<br>DIN 98 Form E |
|----------------------|-----------------------|-----|------|----|----|----|----|------|--------------|--------------------------------|---------------------------------|
| <b>K0160.5200X18</b> | reamed hole with slot | 200 | 18H7 | 43 | 24 | 45 | 6  | 20,8 | 3            | -                              | ø25 x M10 x 83                  |
| <b>K0160.5200X22</b> | reamed hole with slot | 200 | 22H7 | 43 | 24 | 45 | 6  | 24,8 | 3            | -                              | ø25 x M10 x 83                  |
| <b>K0160.5250X22</b> | reamed hole with slot | 250 | 22H7 | 49 | 28 | 50 | 6  | 24,8 | 5            | -                              | ø32 x M12 x 105,5               |
| <b>K0160.5250X26</b> | reamed hole with slot | 250 | 26H7 | 49 | 28 | 50 | 8  | 29,3 | 5            | -                              | ø32 x M12 x 105,5               |
| <b>K0160.5315X26</b> | reamed hole with slot | 315 | 26H7 | 54 | 33 | 56 | 8  | 29,3 | 5            | -                              | ø32 x M12 x 105,5               |
| <b>K0160.5315X30</b> | reamed hole with slot | 315 | 30H7 | 54 | 33 | 56 | 8  | 33,3 | 5            | -                              | ø32 x M12 x 105,5               |
| <b>K0160.5400X30</b> | reamed hole with slot | 400 | 30H7 | 65 | 38 | 63 | 8  | 33,3 | 5            | -                              | ø36 x M16 x 117                 |
| <b>K0160.5400X34</b> | reamed hole with slot | 400 | 34H7 | 65 | 38 | 63 | 10 | 37,3 | 5            | -                              | ø36 x M16 x 117                 |
| <b>K0160.5500X34</b> | reamed hole with slot | 500 | 34H7 | 79 | 45 | 72 | 10 | 37,3 | 5            | -                              | ø36 x M16 x 117                 |
| <b>K0160.5500X40</b> | reamed hole with slot | 500 | 40H7 | 79 | 45 | 72 | 12 | 43,3 | 5            | -                              | ø36 x M16 x 117                 |