

Vertical Toggle Clamp

Part No. GH-10247



Product Description

Vertical Toggle Clamp Flat Base
Slotted Arm Size 450Kg

Key Features

Overall Height: 226mm
Underarm Height: 50.8mm
Arm Length: 125.4mm
Holding Force: 450Kg

Other Features

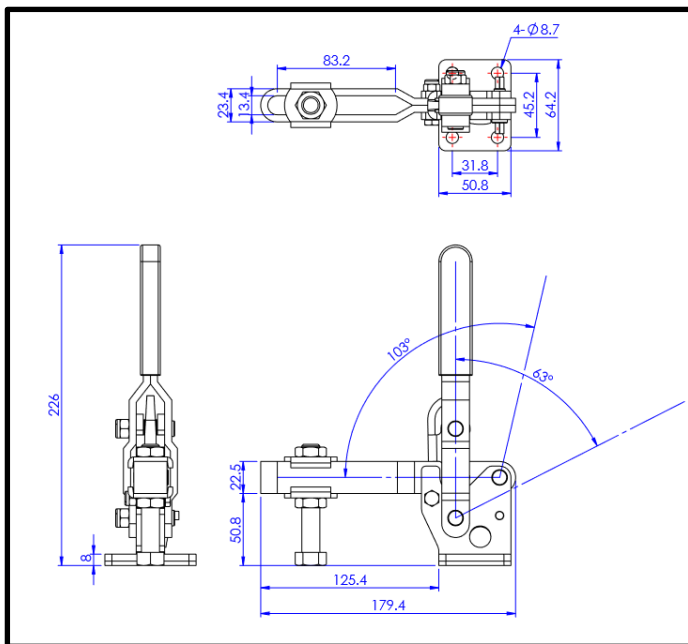
Arm Opens: 103°
Handle Opens: 63°
Weight: 1.30Kg

Material

Clamp: Zinc Plated Mild Steel
Spindle: Zinc Plated Mild Steel
Handle: uPVC

What's In The Bag?

GH-10247: Toggle Clamp
2x FW-120: Flanged Washers For 12mm Spindle
SA-121017: M12x100mm Zinc Plated Steel
Spindle With Nuts



goodhanduk.co.uk

01908 221 151