

Single cam levers

Item description/product images



Description

Material:

Tempered steel 1.7220, plastic ball

Surface finish:

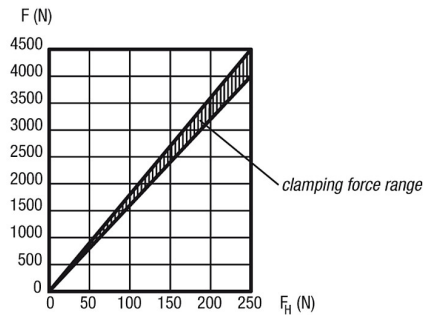
Heat-treated and black oxide finish

Note:

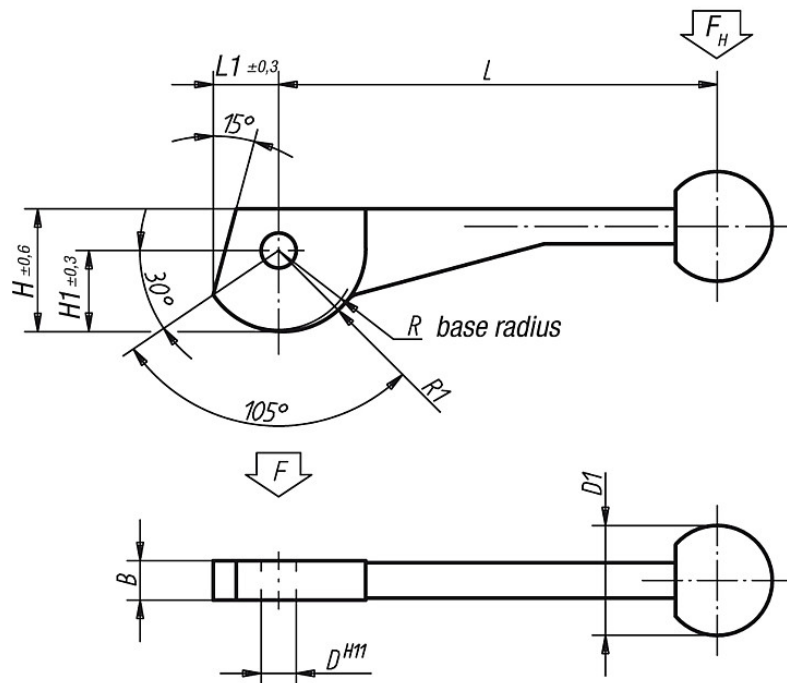
Suitable hinge pin, see K0007.

The cam lever is an eccentric lever that moves along a logarithmic spiral. Its clamping properties are even over the entire contact surface of the cam.

Force diagram



Drawings



Overview of items

Order No.	L	L1	B	H	H1	D	D1	R	R1	Approx. weight kg
K0008.08	100	14,9	9	28	18,5	8	25	17,5	19,2	0,100
K0008.10	120	18,7	12	35	23,3	10	30	21,5	24	0,210
K0008.12	138,5	24,3	14	44	30,2	12	30	28	31,2	0,335

