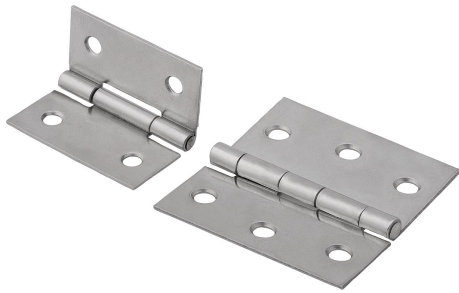


Hinges steel or stainless steel plate

Item description/product images



Description

Material:

Steel or stainless steel 1.4301.

Version:

Steel electro zinc-plated.

Stainless steel bright.

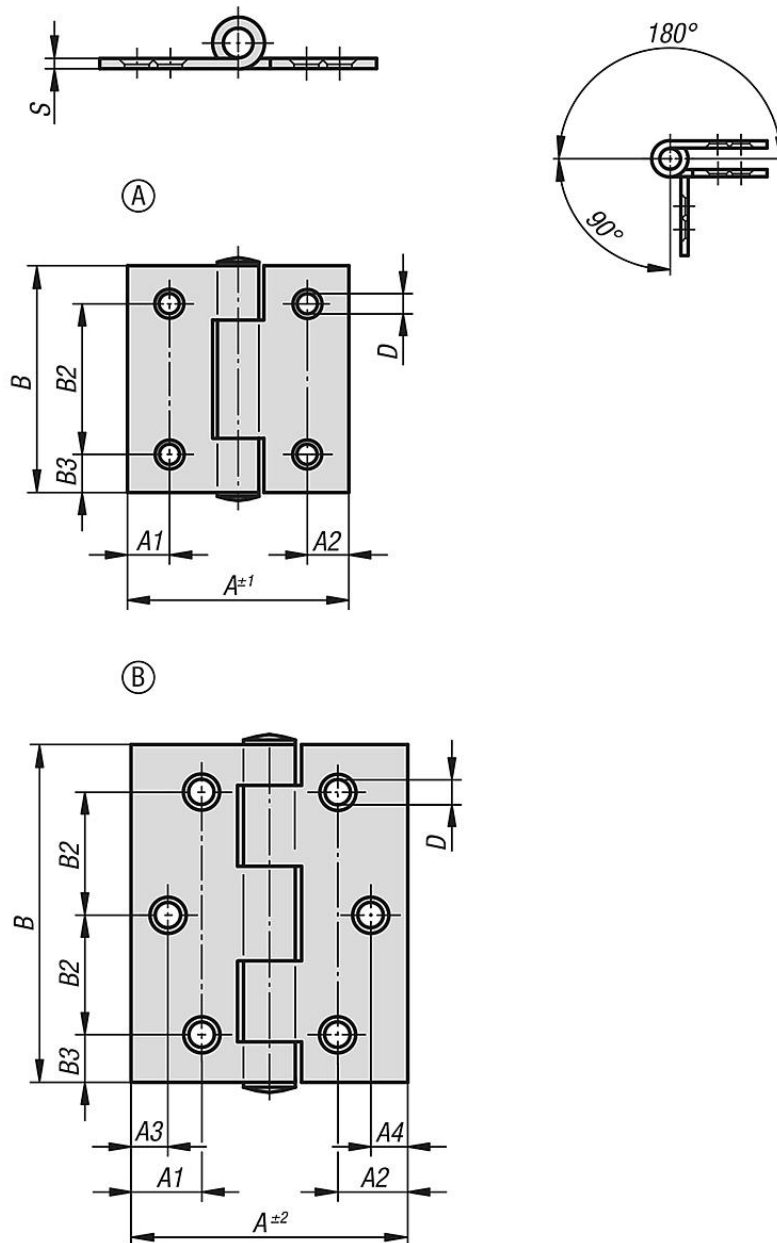
Note:

Rolled plate butt hinges.

Pins are riveted.

Screw holes countersunk.

Drawings



Hinges steel or stainless steel plate

Overview of items

Hinges, steel or stainless steel plate

Order No.	Material	Form	A1	A2	A3	A4	A	B	B2	B3	D	S
K1082.04201212	steel	A	8,5	8,5	-	-	40	40	25	7,5	4	1
K1082.04301515	steel	B	15	15	8	8	60	60	22,5	7,5	4,5	1,5
K1082.104201212	stainless steel	A	8,5	8,5	-	-	40	40	25	7,5	4	1
K1082.104251414	stainless steel	B	11	11	8	8	50	50	18	7	4,5	1,25
K1082.104301515	stainless steel	B	15	15	8	8	60	60	22,5	7,5	4,5	1,5
K1082.105401515	stainless steel	B	25,3	25,3	12	12	80	80	30	10	5,2	1,5