

Latch Toggle Clamp

Part No. GH-40820-VSS



Product Description

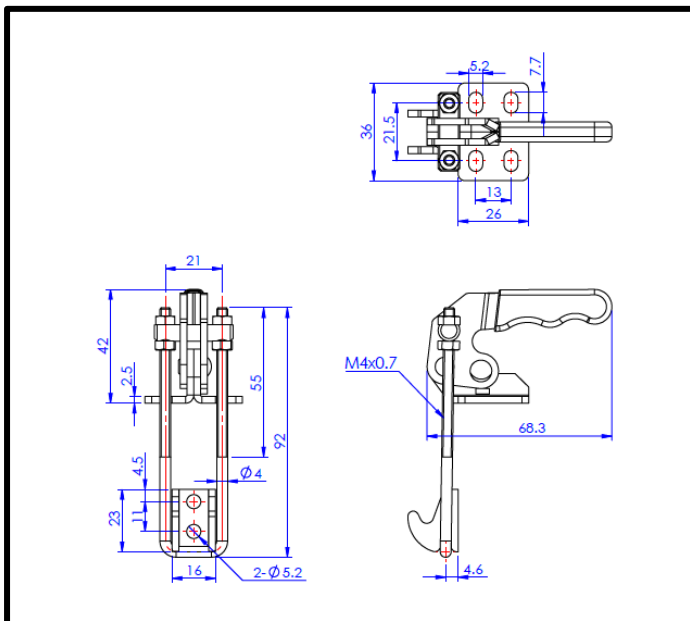
Vertical Latch Clamp In SS Size
200daN

Key Features

Overall Height: 92mm
Catch Plate Width: 16mm
Holding Force: 200daN

Other Features

Weight: 0.11Kg



Material

Toggle Clamp: 304 Stainless Steel
U Bar: 304 Stainless Steel
Latch Plate: 304 Stainless Steel

What's In The Bag?

Toggle Clamp: GH-40820-VSS
Latch Plate: GH-40820-LPSS
U Bar: GH-40820-UBSS



goodhanduk.co.uk

01908 221 151