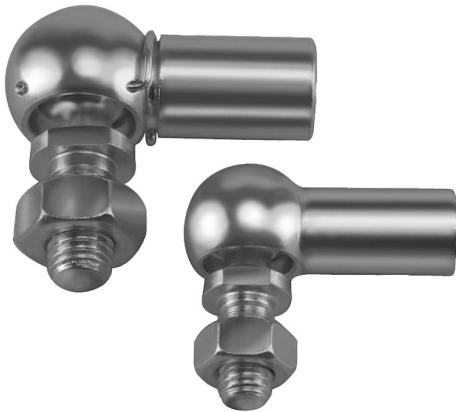


## Ball joints DIN 71802

### Item description/product images



### Description

**Material:**

Steel or stainless steel 1.4305

**Surface finish:**

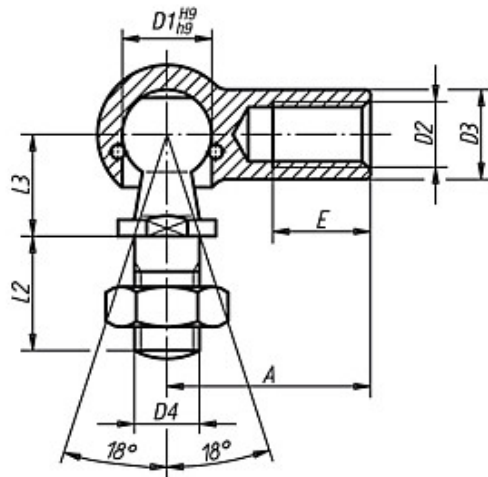
galvanized and chromated;  
stainless steel natural finish

**On request:**

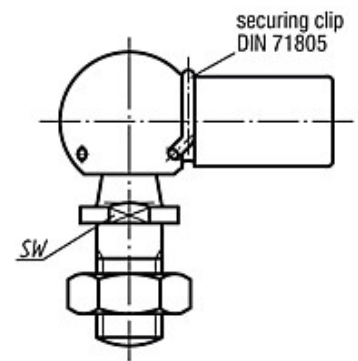
Left-handed thread.

### Drawings

Form C  
without securing clip



Form CS  
with securing clip



### Overview of items

Order No.	Form	Material	D1	D2	D3	D4	A	L2	L3	E	SW	Approx. weight g
K0734.0805	C	steel	8	M5	8	M5	22	10	9	10,2	7	15,2
K0734.1006	C	steel	10	M6	10	M6	25	12	11	11,5	8	25,2
K0734.1308	C	steel	13	M8	13	M8	30	16	13	14	11	53,1
K0734.1610	C	steel	16	M10	16	M10	35	19	16	15,5	13	103,8
K0734.1612	C	steel	16	M12	16	M12	35	19	16	15,5	13	103,8
K0734.1914	C	steel	19	M14x1,5	22	M14x1,5	45	27	20	21,5	16	220,9
K0734.1916	C	steel	19	M16	22	M16	45	27	20	21,5	16	220,9
K0734.08051	CS	steel	8	M5	8	M5	22	10	9	10,2	7	15,2
K0734.10061	CS	steel	10	M6	10	M6	25	12	11	11,5	8	25,2
K0734.13081	CS	steel	13	M8	13	M8	30	16	13	14	11	53,1
K0734.16101	CS	steel	16	M10	16	M10	35	19	16	15,5	13	103,8
K0734.16121	CS	steel	16	M12	16	M12	35	19	16	15,5	13	103,8
K0734.19141	CS	steel	19	M14x1,5	22	M14x1,5	45	27	20	21,5	16	220,9
K0734.19161	CS	steel	19	M16	22	M16	45	27	20	21,5	16	220,9
K0734.08052	CS	stainless steel	8	M5	8	M5	22	10	9	10,2	7	15,2
K0734.10062	CS	stainless steel	10	M6	10	M6	25	12	11	11,5	8	25,2
K0734.13082	CS	stainless steel	13	M8	13	M8	30	16	13	14	11	53,1
K0734.16102	CS	stainless steel	16	M10	16	M10	35	19	16	15,5	13	103,8
K0734.16122	CS	stainless steel	16	M12	16	M12	35	19	16	15,5	13	103,8

