

# Strap hinges stainless steel with grease nipple

## Item description/product images



## Description

### Material:

Stainless steel 1.4301.

### Version:

Matt polished.

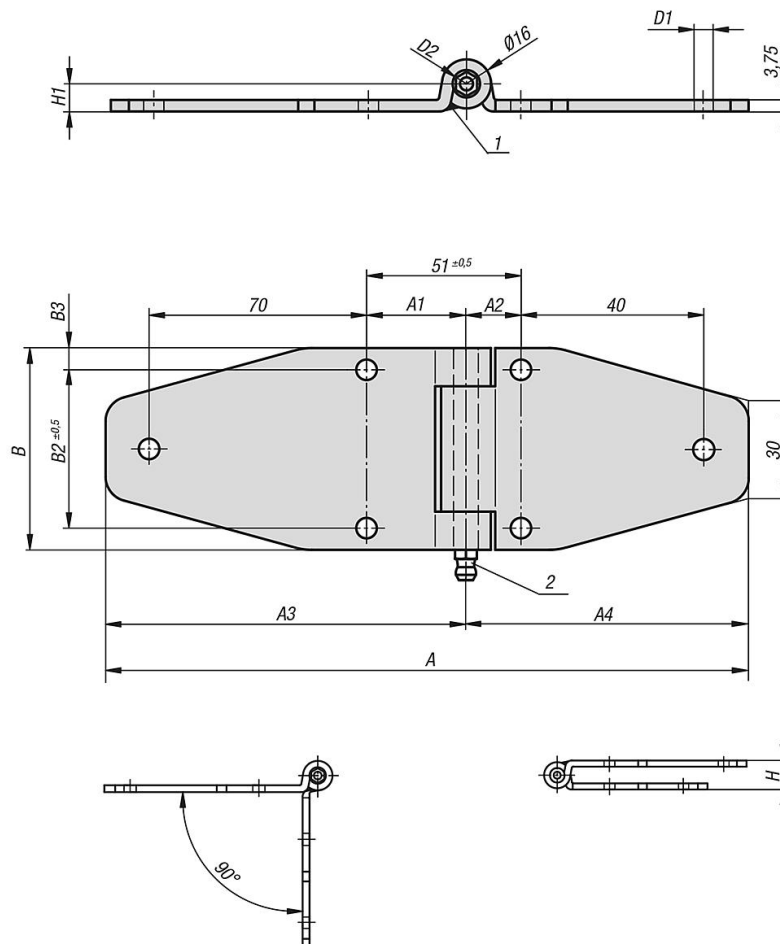
### Note:

Strap hinge for inwards opening doors.  
The opening angle is max. 270°.

### Drawing reference:

- 1) Rolled ends of long leaf welded
- 2) Grease nipple

## Drawings



## Overview of items

### Strap hinges stainless steel with grease nipple

## Strap hinges stainless steel with grease nipple

### Overview of items

Order No.	A	A1	A2	A3	A4	B	B2	B3	D1	D2	H	H1
K1347.06701161932	186	32	19	116	70	65	51	7	6,6	8	18	9