

Grey cast iron handwheels DIN 950

Item description/product images



Description

Material:

Handwheel in grey cast iron.
Machine handle in steel.

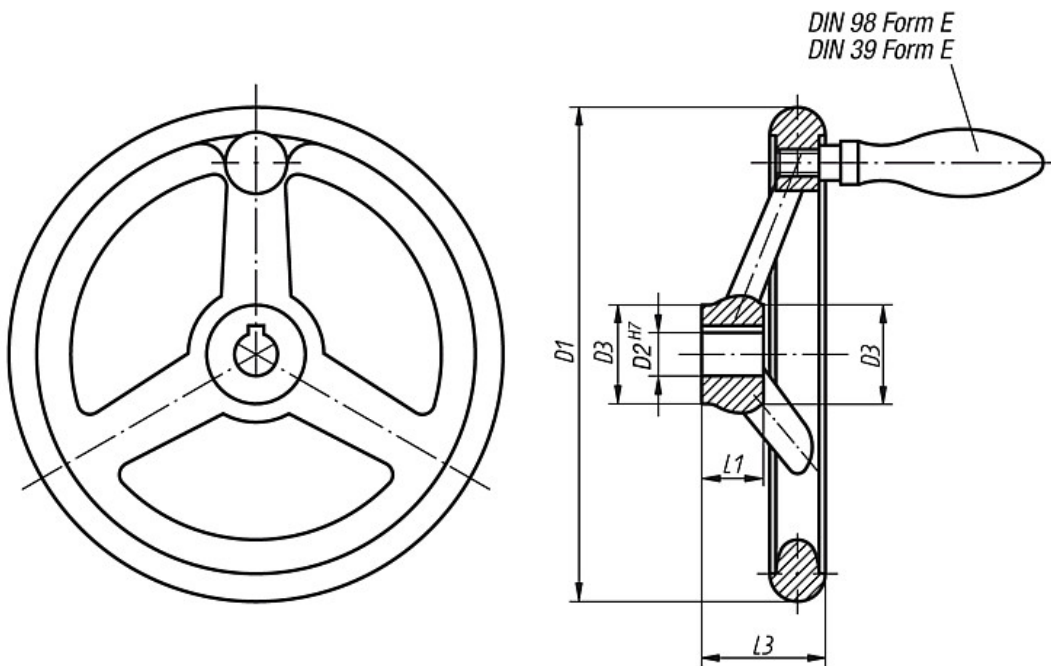
Surface finish:

Wheel rim turned and polished.
Centre bore is concentric and parallel with outside of handle to IT 12.

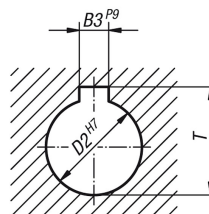
On request:

Hubs with square socket or plastic-coated handwheels.

Drawings



hub slot according to DIN 6885-1



Overview of items

Order No. hub without slot	Order No. hub with slot	D1	D2 line 1	D2 line 2	D3	L1	L3	B3 line 1	B3 line 2	T line 1	T line 2	Number of spokes	Approx. weight kg
K0671.0080X10	K0671.1080X10	80	10	-	24	16	29	3	-	11,4	-	3	0,350
K0671.0080X12	K0671.1080X12	80	-	12	24	16	29	-	4	-	13,8	3	0,350
K0671.0100X10	K0671.1100X10	100	10	-	26	17	33	3	-	11,4	-	3	0,600
K0671.0100X12	K0671.1100X12	100	-	12	26	17	33	-	4	-	13,8	3	0,600
K0671.0125X12	K0671.1125X12	125	12	-	28	18	36	4	-	13,8	-	3	0,800

Grey cast iron handwheels DIN 950

Overview of items

Order No. hub without slot	Order No. hub with slot	D1	D2 line 1	D2 line 2	D3	L1	L3	B3 line 1	B3 line 2	T line 1	T line 2	Number of spokes	Approx. weight kg
K0671.0125X14	K0671.1125X14	125	-	14	28	18	36	-	5	-	16,3	3	0,800
K0671.0140X14	K0671.1140X14	140	14	-	30	19	39	5	-	16,3	-	3	1,000
K0671.0140X16	K0671.1140X16	140	-	16	30	19	39	-	5	-	18,3	3	1,000
K0671.0160X14	K0671.1160X14	160	14	-	32	20	40	5	-	16,3	-	3	1,350
K0671.0160X16	K0671.1160X16	160	-	16	32	20	40	-	5	-	18,3	3	1,350
K0671.0180X16	K0671.1180X16	180	16	-	35	22	43	5	-	18,3	-	3	1,600
K0671.0180X18	K0671.1180X18	180	-	18	35	22	43	-	6	-	20,8	3	1,600
K0671.0200X18	K0671.1200X18	200	18	-	38	24	45	6	-	20,8	-	3	2,300
K0671.0200X22	K0671.1200X22	200	-	22	38	24	45	-	6	-	24,8	3	2,300
K0671.0250X22	K0671.1250X22	250	22	-	45	28	50	6	-	24,8	-	5	4,250
K0671.0250X26	K0671.1250X26	250	-	26	45	28	50	-	8	-	29,3	5	4,250
K0671.0315X26	K0671.1315X26	315	26	-	53	33	56	8	-	29,3	-	5	6,400
K0671.0315X30	K0671.1315X30	315	-	30	53	33	56	-	8	-	33,3	5	6,400
K0671.0400X30	K0671.1400X30	400	30	-	65	38	63	8	-	33,3	-	5	10,500
K0671.0400X34	K0671.1400X34	400	-	34	65	38	63	-	10	-	37,3	5	10,500
K0671.0500X34	K0671.1500X34	500	34	-	78	45	72	10	-	37,3	-	5	17,000
K0671.0500X40	K0671.1500X40	500	-	40	78	45	72	-	12	-	43,3	5	17,000

Order No. hub without slot	Order No. hub with slot	D1	D2 line 1	D2 line 2	D3	L1	L3	B3 line 1	B3 line 2	T line 1	T line 2	Number of spokes	fixed machine handle DIN 39 Form E	Approx. weight kg
K0671.2080X10	K0671.3080X10	80	10	-	24	16	29	3	-	11,4	-	3	ø16 x M6 x 50	0,400
K0671.2080X12	K0671.3080X12	80	-	12	24	16	29	-	4	-	13,8	3	ø16 x M6 x 50	0,400
K0671.2100X10	K0671.3100X10	100	10	-	26	17	33	3	-	11,4	-	3	ø16 x M6 x 50	0,650
K0671.2100X12	K0671.3100X12	100	-	12	26	17	33	-	4	-	13,8	3	ø16 x M6 x 50	0,650
K0671.2125X12	K0671.3125X12	125	12	-	28	18	36	4	-	13,8	-	3	ø20 x M8 x 64	0,890
K0671.2125X14	K0671.3125X14	125	-	14	28	18	36	-	5	-	16,3	3	ø20 x M8 x 64	0,890
K0671.2140X14	K0671.3140X14	140	14	-	30	19	39	5	-	16,3	-	3	ø20 x M8 x 64	1,090
K0671.2140X16	K0671.3140X16	140	-	16	30	19	39	-	5	-	18,3	3	ø20 x M8 x 64	1,090
K0671.2160X14	K0671.3160X14	160	14	-	32	20	40	5	-	16,3	-	3	ø25 x M10 x 80	1,530
K0671.2160X16	K0671.3160X16	160	-	16	32	20	40	-	5	-	18,3	3	ø25 x M10 x 80	1,530
K0671.2180X16	K0671.3180X16	180	16	-	35	22	43	5	-	18,3	-	3	ø25 x M10 x 80	1,780
K0671.2180X18	K0671.3180X18	180	-	18	35	22	43	-	6	-	20,8	3	ø25 x M10 x 80	1,780
K0671.2200X18	K0671.3200X18	200	18	-	38	24	45	6	-	20,8	-	3	ø25 x M10 x 80	2,480
K0671.2200X22	K0671.3200X22	200	-	22	38	24	45	-	6	-	24,8	3	ø25 x M10 x 80	2,480
K0671.2250X22	K0671.3250X22	250	22	-	45	28	50	6	-	24,8	-	5	ø32 x M12 x 100	4,610
K0671.2250X26	K0671.3250X26	250	-	26	45	28	50	-	8	-	29,3	5	ø32 x M12 x 100	4,610
K0671.2315X26	K0671.3315X26	315	26	-	53	33	56	8	-	29,3	-	5	ø32 x M12 x 100	6,760
K0671.2315X30	K0671.3315X30	315	-	30	53	33	56	-	8	-	33,3	5	ø32 x M12 x 100	6,760
K0671.2400X30	K0671.3400X30	400	30	-	65	38	63	8	-	33,3	-	5	ø36 x M16 x 112	11,030
K0671.2400X34	K0671.3400X34	400	-	34	65	38	63	-	10	-	37,3	5	ø36 x M16 x 112	11,030
K0671.2500X34	K0671.3500X34	500	34	-	78	45	72	10	-	37,3	-	5	ø36 x M16 x 112	17,530
K0671.2500X40	K0671.3500X40	500	-	40	78	45	72	-	12	-	43,3	5	ø36 x M16 x 112	17,530

Order No. hub without slot	Order No. hub with slot	D1	D2 line 1	D2 line 2	D3	L1	L3	B3 line 1	B3 line 2	T line 1	T line 2	Number of spokes	revolving machine handle DIN 98 Form E	Approx. weight kg
K0671.4080X10	K0671.5080X10	80	10	-	24	16	29	3	-	11,4	-	3	ø16 x M6 x 54,5	0,400
K0671.4080X12	K0671.5080X12	80	-	12	24	16	29	-	4	-	13,8	3	ø16 x M6 x 54,5	0,400
K0671.4100X10	K0671.5100X10	100	10	-	26	17	33	3	-	11,4	-	3	ø16 x M6 x 54,5	0,650
K0671.4100X12	K0671.5100X12	100	-	12	26	17	33	-	4	-	13,8	3	ø16 x M6 x 54,5	0,650
K0671.4125X12	K0671.5125X12	125	12	-	28	18	36	4	-	13,8	-	3	ø20 x M8 x 67	0,890
K0671.4125X14	K0671.5125X14	125	-	14	28	18	36	-	5	-	16,3	3	ø20 x M8 x 67	0,890
K0671.4140X14	K0671.5140X14	140	14	-	30	19	39	5	-	16,3	-	3	ø20 x M8 x 67	1,090
K0671.4140X16	K0671.5140X16	140	-	16	30	19	39	-	5	-	18,3	3	ø20 x M8 x 67	1,090
K0671.4160X14	K0671.5160X14	160	14	-	32	20	40	5	-	16,3	-	3	ø25 x M10 x 83	1,530
K0671.4160X16	K0671.5160X16	160	-	16	32	20	40	-	5	-	18,3	3	ø25 x M10 x 83	1,530
K0671.4180X16	K0671.5180X16	180	16	-	35	22	43	5	-	18,3	-	3	ø25 x M10 x 83	1,780
K0671.4180X18	K0671.5180X18	180	-	18	35	22	43	-	6	-	20,8	3	ø25 x M10 x 83	1,780
K0671.4200X18	K0671.5200X18	200	18	-	38	24	45	6	-	20,8	-	3	ø25 x M10 x 83	2,480
K0671.4200X22	K0671.5200X22	200	-	22	38	24	45	-	6	-	24,8	3	ø25 x M10 x 83	2,480

Grey cast iron handwheels DIN 950

Overview of items

Order No. hub without slot	Order No. hub with slot	D1	D2 line 1	D2 line 2	D3	L1	L3	B3 line 1	B3 line 2	T line 1	T line 2	Number of spokes	revolving machine handle DIN 98 Form E	Approx. weight kg
K0671.4250X22	K0671.5250X22	250	22	-	45	28	50	6	-	24,8	-	5	ø32 x M12 x 105,5	4,610
K0671.4250X26	K0671.5250X26	250	-	26	45	28	50	-	8	-	29,3	5	ø32 x M12 x 105,5	4,610
K0671.4315X26	K0671.5315X26	315	26	-	53	33	56	8	-	29,3	-	5	ø32 x M12 x 105,5	6,760
K0671.4315X30	K0671.5315X30	315	-	30	53	33	56	-	8	-	33,3	5	ø32 x M12 x 105,5	6,760
K0671.4400X30	K0671.5400X30	400	30	-	65	38	63	8	-	33,3	-	5	ø36 x M16 x 117	11,030
K0671.4400X34	K0671.5400X34	400	-	34	65	38	63	-	10	-	37,3	5	ø36 x M16 x 117	11,030
K0671.4500X34	K0671.5500X34	500	34	-	78	45	72	10	-	37,3	-	5	ø36 x M16 x 117	17,530
K0671.4500X40	K0671.5500X40	500	-	40	78	45	72	-	12	-	43,3	5	ø36 x M16 x 117	17,530