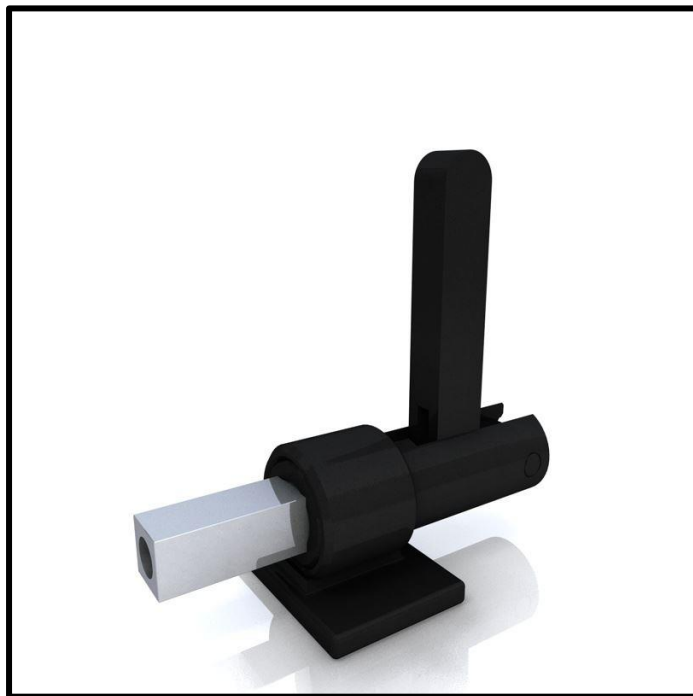


Push-Pull Toggle Clamp

Part No. GH-30509M



Product Description

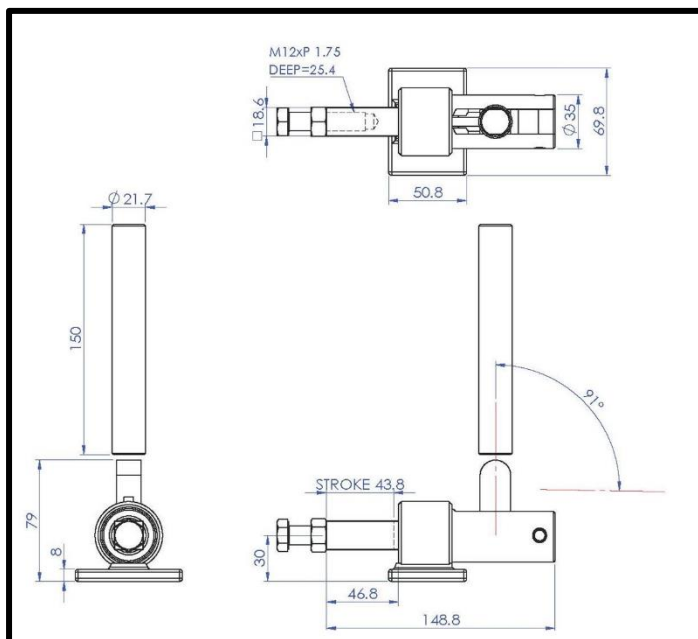
Push Pull Toggle Clamp Plunger
Stroke 43.8mm Size 1136Kg

Key Features

Overall Height: 229mm
Length: 148.8mm
Stroke: 46.8mm
Holding Force: 1136Kg

Other Features

Arm Opens: 91°
Weight: 1.396Kg



Material

Toggle Clamp: Zinc Plated Mild Steel
Base: Zinc Plated Mild Steel
Spindle: Zinc Plated Mild Steel
Handle: Zinc Plated Mild Steel

What's In The Bag?

GH-30509M: Toggle Clamp
SA-125017: M12x50mm Zinc Plated Steel Spindle
With Nut
Handle
Clamp Base



goodhanduk.co.uk

01908 221 151