

Handwheels 2-spoke flat rim, aluminium

Item description/product images



Description

Material:

Handwheels aluminium.

Cylinder grip black thermoset PF 31-DIN 7708, centre pin electro zinc-plated steel.

Version:

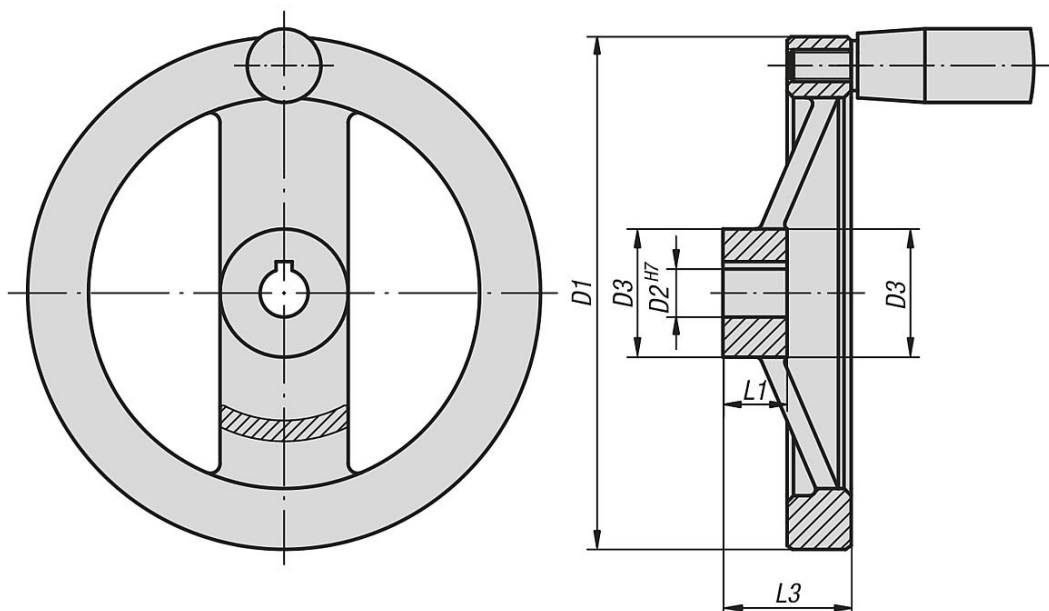
Wheel rim turned and polished.

Radial and axial run-out of rim < IT 12.

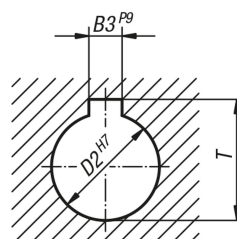
On request:

Hubs with square socket or powder-coated handwheels.

Drawings



DIN 6885-1



Overview of items

