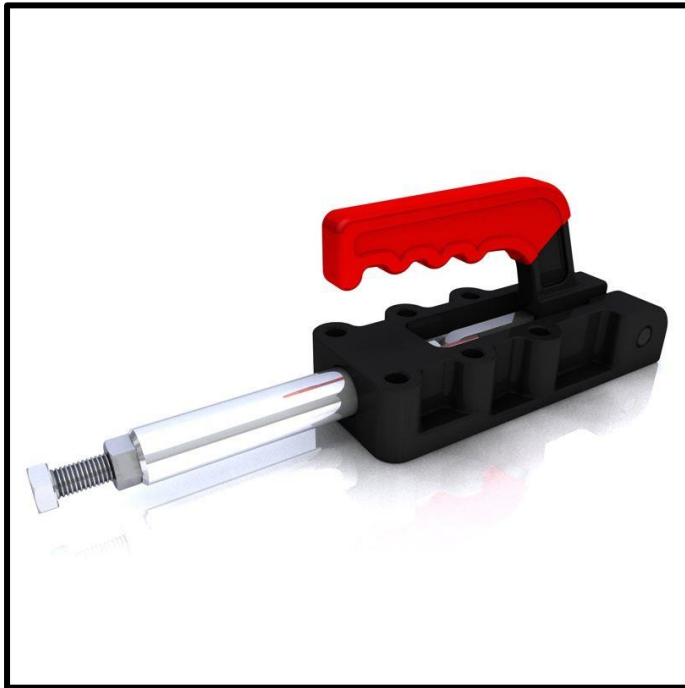


# Push-Pull Toggle Clamp

Part No. GH-32500M

**GH GoodHand UK**



## Product Description

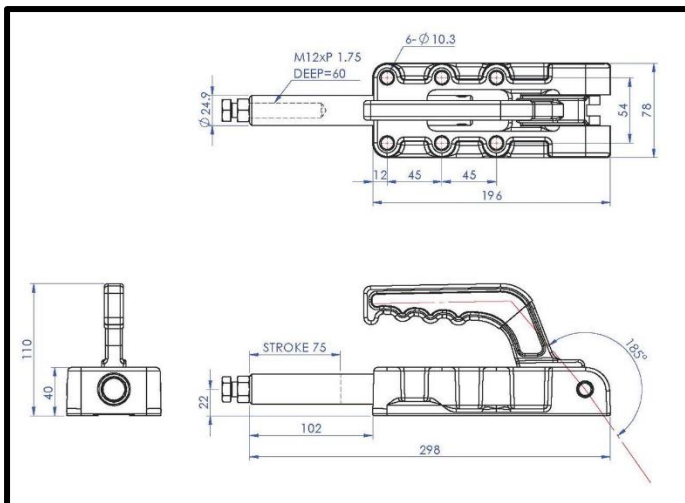
Push Pull Toggle Clamp Plunger  
Stroke 75mm Size 2500Kg

## Key Features

Overall Height: 110mm  
Length: 298mm  
Stroke: 75mm  
Holding Force: 2500Kg

## Other Features

Arm Opens: 185°  
Weight: 3.894Kg



## Material

Clamp Shaft: Zinc Plated Mild Steel  
Clamp Casting: Cast Iron  
Spindle: Zinc Plated Mild Steel  
Handle: uPVC

## What's In The Bag?

GH-32500M: Toggle Clamp  
SA-125017: M12x50mm Zinc Plated Steel Spindle  
With Nut

**GH GoodHand UK**

[goodhanduk.co.uk](http://goodhanduk.co.uk)

01908 221 151