

# Tension levers

## Item description/product images



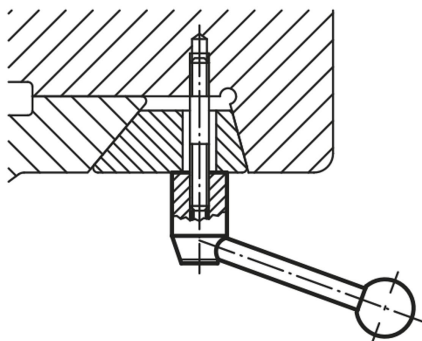
### Description

**Material:**  
Steel parts grade 5.8.  
Ball knob black plastic.

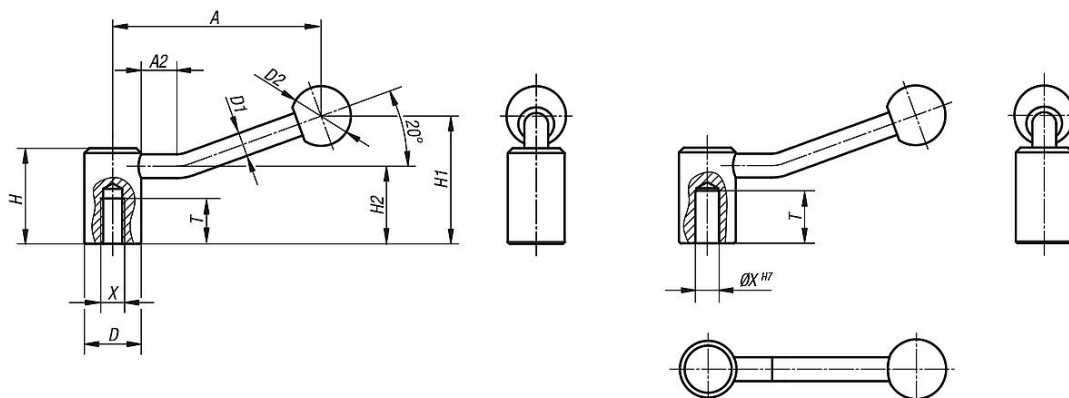
**Version:**  
Black oxidised.

**Note:**  
Tension levers can be used for simple clamping or control operations.  
Where applicable, there must be enough space available so that the grip can be rotated 360°.

**On request:**  
Other internal threads, reamed holes and special versions.  
Dimension "A" available in other lengths at extra charge.



## Drawings



## Overview of items

### Tension levers

Order No.	Form	Thread type	Size	X	A	A2	D	D1	D2	H	H1	H2	T
K0176.2082	0°	internal thread	1	M8	88,1	-	24	10	25	40	-	32,5	18
K0176.2102	0°	internal thread	1	M10	88,1	-	24	10	25	40	-	32,5	18
K0176.21012	0°	internal thread	2	M10	104	-	28	12	32	46	-	36,5	20
K0176.2122	0°	internal thread	2	M12	104	-	28	12	32	46	-	36,5	20
K0176.2162	0°	internal thread	3	M16	126,5	-	33	13	32	52	-	41	23
K0176.2202	0°	internal thread	4	M20	128,5	-	41	13	32	61	-	49	26
K0176.1102	0°	reamed hole	1	10	88,1	-	24	10	25	40	-	32,5	22
K0176.1122	0°	reamed hole	2	12	104	-	28	12	32	46	-	36,5	25
K0176.1142	0°	reamed hole	2	14	104	-	28	12	32	46	-	36,5	25
K0176.1162	0°	reamed hole	3	16	126,5	-	33	13	32	52	-	41	28
K0176.1202	0°	reamed hole	4	20	128,5	-	41	13	32	61	-	49	32
K0176.208	20°	internal thread	1	M8	84,5	15	24	10	25	40	52,5	32,5	18
K0176.210	20°	internal thread	1	M10	84,5	15	24	10	25	40	52,5	32,5	18

## Tension levers

### Overview of items

Order No.	Form	Thread type	Size	X	A	A2	D	D1	D2	H	H1	H2	T
K0176.2101	20°	internal thread	2	M10	100	15	28	12	32	46	61	36,5	20
K0176.212	20°	internal thread	2	M12	100	15	28	12	32	46	61	36,5	20
K0176.216	20°	internal thread	3	M16	121	15	33	13	32	52	72	41	23
K0176.220	20°	internal thread	4	M20	123	15	41	13	32	61	80	49	26
K0176.110	20°	reamed hole	1	10	84,5	15	24	10	25	40	52,5	32,5	22
K0176.112	20°	reamed hole	2	12	100	15	28	12	32	46	61	36,5	25
K0176.114	20°	reamed hole	2	14	100	15	28	12	32	46	61	36,5	25
K0176.116	20°	reamed hole	3	16	121	15	33	13	32	52	72	41	28
K0176.120	20°	reamed hole	4	20	123	15	41	13	32	61	80	49	32