

Latch Toggle Clamp

Part No. GH-40380-SS



Product Description

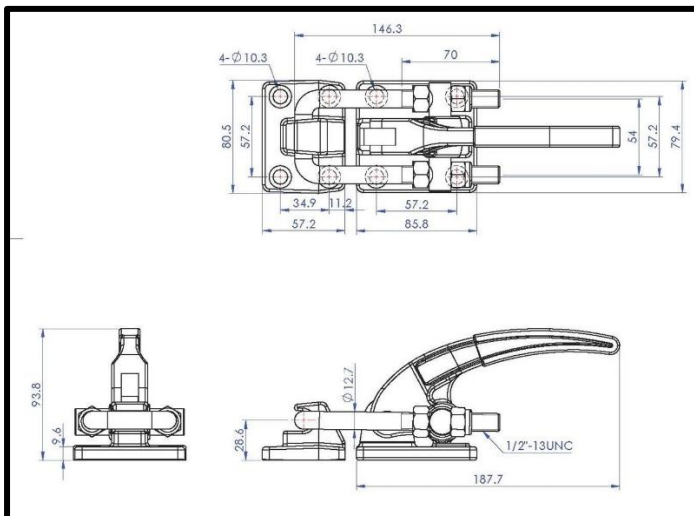
Stainless Steel Latch Clamp With
Latch Plate Size 3400daN

Key Features

Overall Height: 93.8mm
Clamp Length: 187.7mm
Catch Plate Width: 80.5mm
Holding Force: 3400daN

Other Features

Weight: 1.57Kg



Material

Toggle Clamp: 304 Stainless Steel
U Bar: 304 Stainless Steel
Latch Plate: 304 Stainless Steel

What's In The Bag?

Toggle Clamp: GH-40380-SS
Latch Plate: GH-40370-LPSS
U Bar: GH-40380-UBSS



goodhanduk.co.uk

01908 221 151