

Hook Toggle Clamp

Part No. GH-40200



Product Description

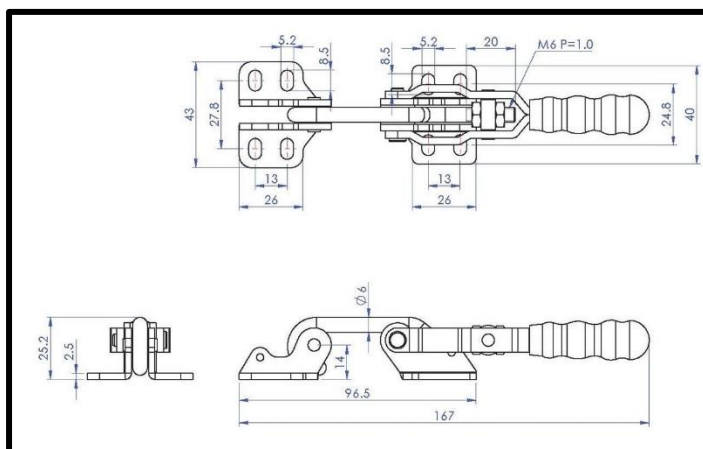
Hook Toggle Clamp With Latch
Plate Size 200daN

Key Features

Overall Height: 25.2mm
Length: 167mm
Hook Diameter: 6mm
Holding Force: 200daN

Other Features

Weight: 0.154Kg



Material

Toggle Clamp: Zinc Plated Mild Steel
Hook: Zinc Plated Mild Steel
Latch Plate: Zinc Plated Mild Steel

What's In The Bag?

Toggle Clamp: GH-40200
Latch Plate: GH-40200-LP



goodhanduk.co.uk

01908 221 151