

Push-Pull Toggle Clamp

Part No. GH-301-CML



Product Description

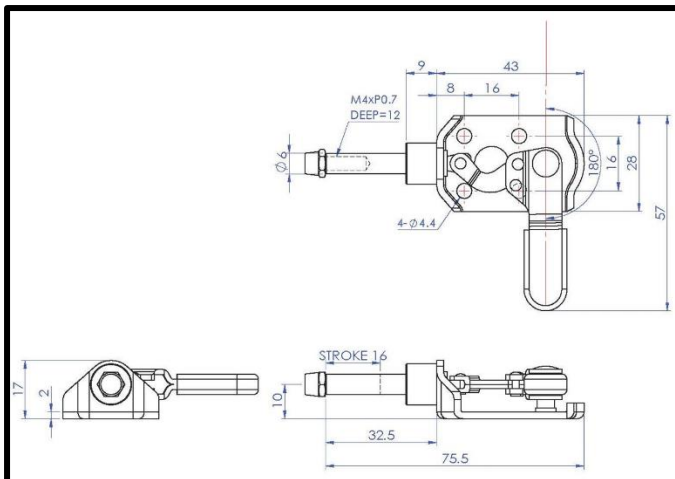
Push Pull Toggle Clamp Left Hand
Plunger Stroke 16mm Size 45Kg

Key Features

Overall Height: 17mm
Length: 75.5mm
Stroke: 16mm
Holding Force: 45Kg

Other Features

Arm Opens: 190°
Weight: 0.065Kg



Material

Clamp: Zinc Plated Mild Steel
Spindle: Neoprene Tipped Steel
Handle: uPVC

What's In The Bag?

GH-301-CML: Toggle Clamp
FC-041807: M4x18mm Neoprene Tipped Steel
Spindle With Nut



goodhanduk.co.uk

01908 221 151