

# Heavy Duty Vertical Toggle Clamp Part No. GH-70310



## Product Description

Heavy Duty Toggle Clamp Swivel Base Solid  
Arm Size 500daN

## Key Features

Overall Height:	109.5mm
Underarm Height:	20mm
Arm Length:	15mm
Holding Force:	500daN

## Other Features

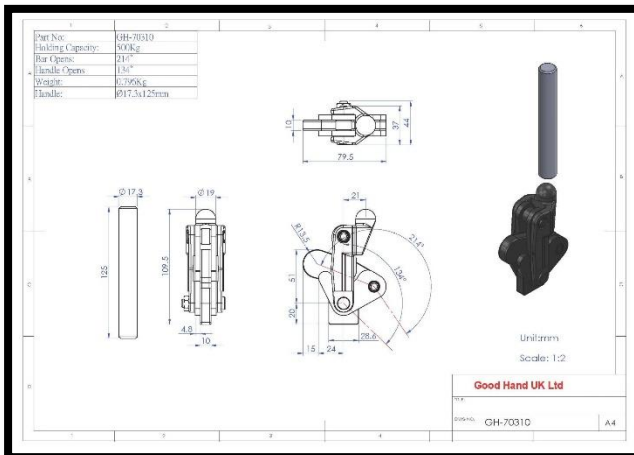
Arm Opens:	214°
Handle Opens:	134°
Weight:	0.85Kg

## Material

Toggle Clamp:	Cast Iron
Spindle:	
Handle:	Cast Iron
Flanged Washers:	

## Whats In The Bag?

Toggle Clamp:	GH-70310
Spindle:	
2x Flanged Washers:	



[goodhanduk.co.uk](http://goodhanduk.co.uk)

01908 221 151