

Ring nuts DIN 582

Item description/product images



Description

Material:

1.1141 steel, 1.4301 stainless steel or 1.4401 stainless steel.

Version:

drop forged.

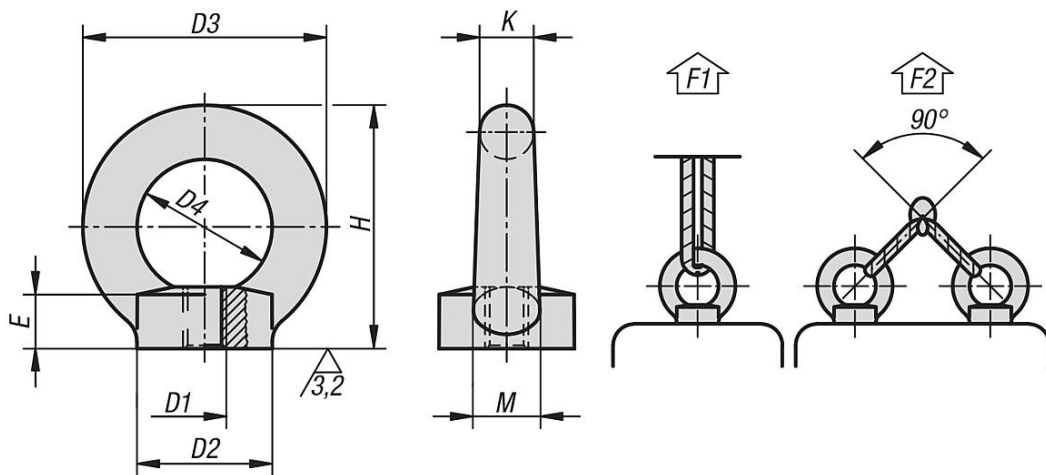
Note:

For high demand hoisting and carrying tasks in safety-relevant areas (machine construction, load handling equipment, lifting tackle).

The CE mark is impressed into the ring bolt.

F2 permissible load under max. 45° per ring bolt.

Drawings



Overview of items

Ring nuts DIN 582

Order No.	Main material	Steel code	D1	D2	D3	D4	E	H	K	M	F1 max. kN	F2 max. kN	Permissible load kg
K0768.08	steel	1.1141	M8	20	36	20	8,5	36	8	10	1,4	0,95	96,9
K0768.10	steel	1.1141	M10	25	45	25	10	45	10	12	2,3	1,7	173,4
K0768.12	steel	1.1141	M12	30	54	30	11	53	12	14	3,4	2,4	244,8
K0768.16	steel	1.1141	M16	35	63	35	13	62	14	16	7	5	510
K0768.20	steel	1.1141	M20	40	72	40	16	71	16	19	12	8,3	846,6
K0768.24	steel	1.1141	M24	50	90	50	20	90	20	24	18	12,7	1295,4
K0768.108	stainless steel	1.4301	M8	20	36	20	8,5	36	8	10	1,4	0,95	96,9
K0768.110	stainless steel	1.4301	M10	25	45	25	10	45	10	12	2,3	1,7	173,4
K0768.112	stainless steel	1.4301	M12	30	54	30	11	53	12	14	3,4	2,4	244,8
K0768.116	stainless steel	1.4301	M16	35	63	35	13	62	14	16	7	5	510
K0768.120	stainless steel	1.4301	M20	40	72	40	16	71	16	19	12	8,3	846,6
K0768.124	stainless steel	1.4301	M24	50	90	50	20	90	20	24	18	12,7	1295,4
K0768.208	stainless steel	1.4401	M8	20	36	20	8,5	36	8	10	1,4	0,95	96,9
K0768.210	stainless steel	1.4401	M10	25	45	25	10	45	10	12	2,3	1,7	173,4
K0768.212	stainless steel	1.4401	M12	30	54	30	11	53	12	14	3,4	2,4	244,8
K0768.216	stainless steel	1.4401	M16	35	63	35	13	62	14	16	7	5	510
K0768.220	stainless steel	1.4401	M20	40	72	40	16	71	16	19	12	8,3	846,6

Ring nuts DIN 582

Overview of items

Order No.	Main material	Steel code	D1	D2	D3	D4	E	H	K	M	F1 max. kN	F2 max. kN	Permissible load kg
K0768.224	stainless steel	1.4401	M24	50	90	50	20	90	20	24	18	12,7	1295,4