

Push-Pull Toggle Clamp

Part No. GH-30609M



Product Description

Push Pull Toggle Clamp Plunger
Stroke 59.5mm Size 2273Kg

Key Features

Overall Height: 237mm
Length: 198mm
Stroke: 55mm
Holding Force: 2273Kg

Other Features

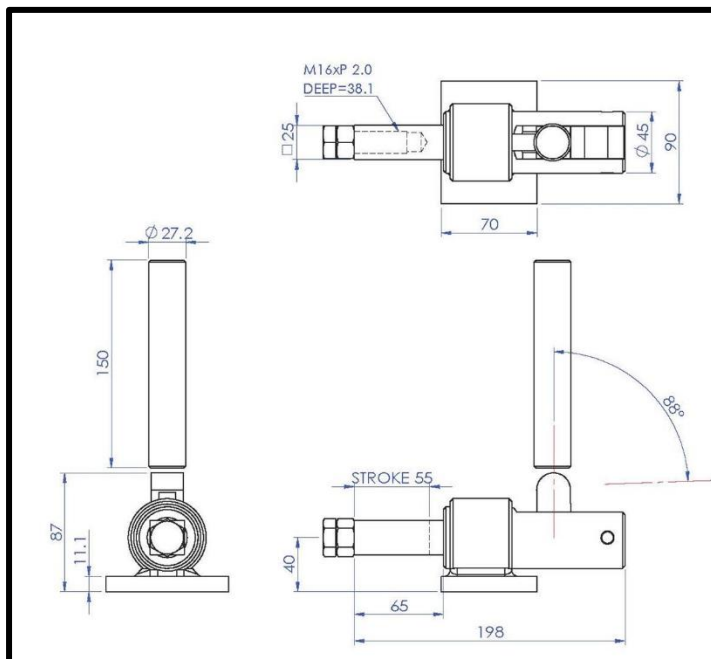
Arm Opens: 88°
Weight: 2.937Kg

Material

Toggle Clamp: Zinc Plated Mild Steel
Base: Zinc Plated Mild Steel
Spindle: Zinc Plated Mild Steel
Handle: Zinc Plated Mild Steel

What's In The Bag?

GH-30609M: Toggle Clamp
SA-165020: M16x50mm Zinc Plated Steel Spindle
With Nut
Handle
Clamp Base



goodhanduk.co.uk

01908 221 151