

# Heavy Duty Vertical Toggle Clamp Part No. GH-70615



## Product Description

Heavy Duty Toggle Clamp Straight Base Solid  
Arm Size 2000daN

## Key Features

Overall Height:	210.9mm
Underarm Height:	76mm
Arm Length:	33mm
Holding Force:	2000daN

## Other Features

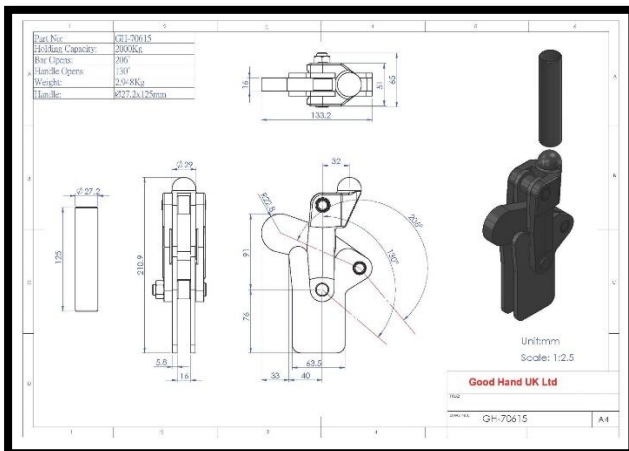
Arm Opens:	206°
Handle Opens:	130°
Weight:	2.95Kg

## Material

Toggle Clamp:	Cast Iron
Spindle:	
Handle:	Cast Iron
Flanged Washers:	

## Whats In The Bag?

Toggle Clamp:	GH-70615
Spindle:	
2x Flanged Washers:	



[goodhanduk.co.uk](http://goodhanduk.co.uk)

01908 221 151