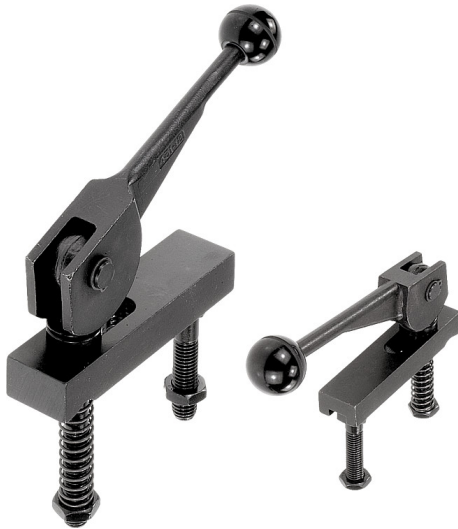


# Double cam clamps

## Item description/product images



### Description

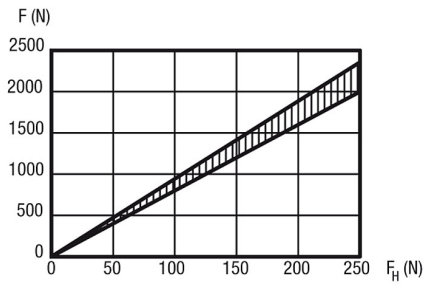
**Material:**

Eccentric lever tempered steel 1.7220,  
strap tempered steel 1.1191

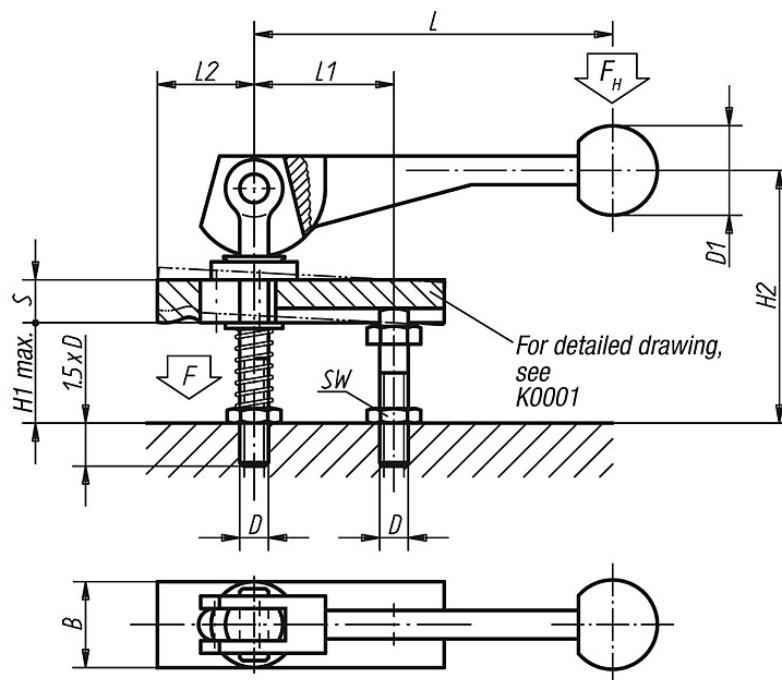
**Surface finish:**

Black oxide finish

### Force diagram



## Drawings



## Double cam clamps

### Overview of items

Order No.	L	L1	L2	B	S	H1 max.	H2	D	D1	SW	Approx. weight kg
K0011.08	100	39	37	20	12	28	74	M8	25	13	0,300
K0011.10	120	49	46	25	16	39	92	M10	30	17	0,600
K0011.12	138,5	61	58	32	20	49	120	M12	30	19	1,100