

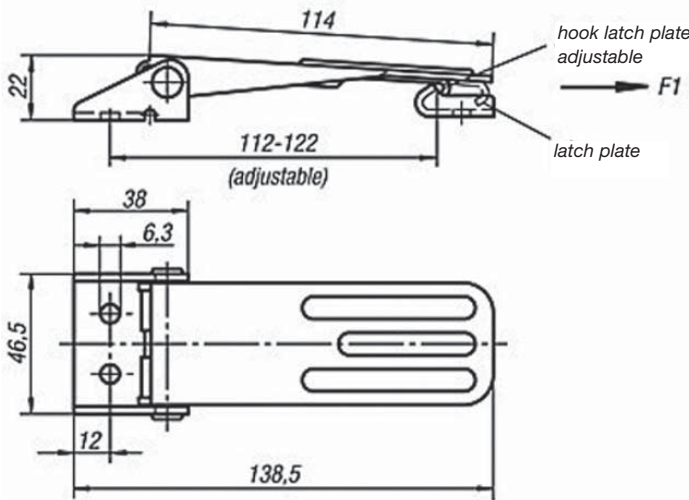
► Medium Duty - Adjustable Screw with Visible Mounting Holes



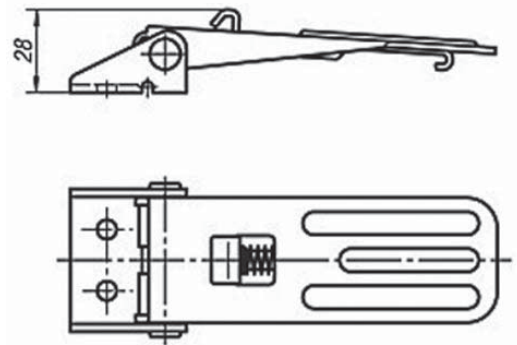
Holding Force: 400Kg	
TOGGLE LATCHES IN STEEL	
Part No	
GH-48.1631391	A
GH-48.2631391	B
GH-48.3631391	C
TOGGLE LATCHES IN STAINLESS STEEL	
Part No	Form
GH-48.1631392	A
GH-48.2631392	B
GH-48.3631392	C

TOGGLE LATCHES

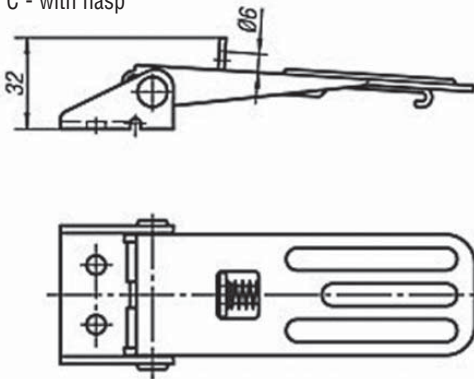
Form A - standard



Form B - with safety

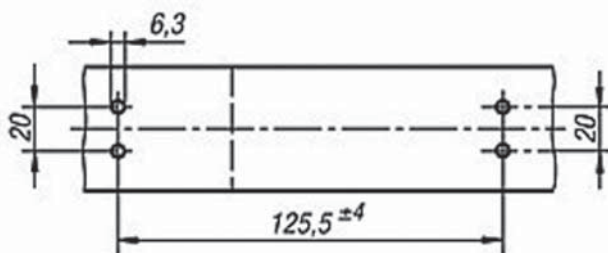


Form C - with hasp



LATCH PLATES IN STEEL	
Part No	Form
GH-48.9163281	A
LATCH PLATES IN STAINLESS STEEL	
Part No	Form
GH-48.9163282	A

Hole arrangements for mounting with latch plate



LATCH PLATES

Latch Plate - Form A

