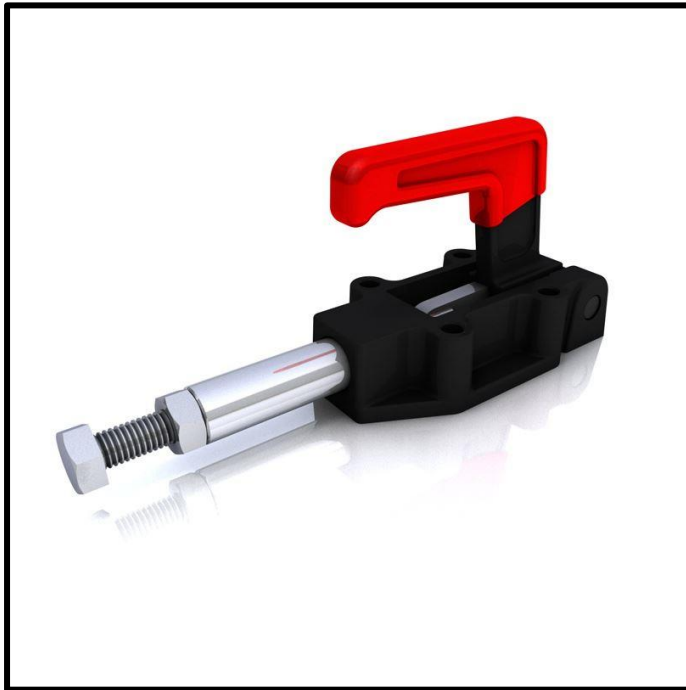


Push-Pull Toggle Clamp

Part No. GH-30600M

GH GoodHand UK



Product Description

Push Pull Toggle Clamp Plunger
Stroke 32mm Size 600Kg

Key Features

Overall Height:	67mm
Length:	128mm
Stroke:	32mm
Holding Force:	600Kg

Other Features

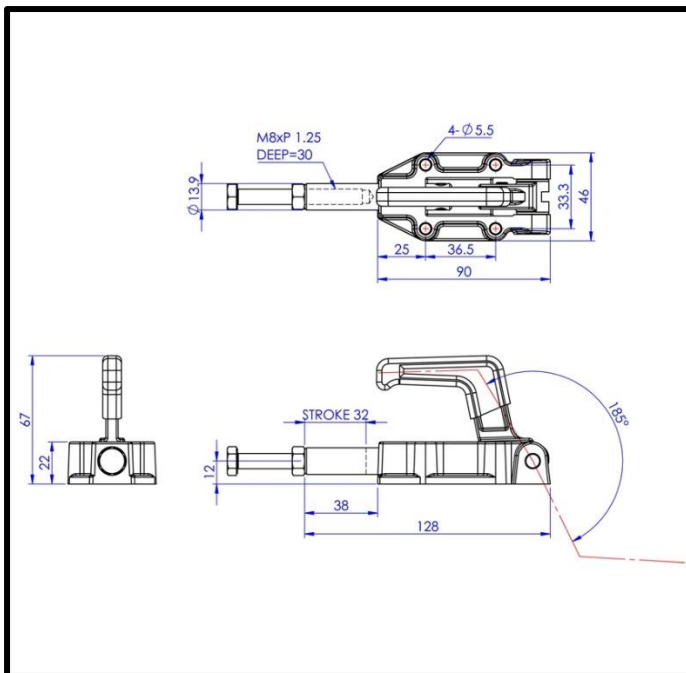
Arm Opens:	185°
Weight:	0.51Kg

Material

Clamp Shaft:	Zinc Plated Mild Steel
Clamp Casting:	Cast Iron
Spindle:	Zinc Plated Mild Steel
Handle:	uPVC

What's In The Bag?

GH-30600M: Toggle Clamp
SA-086512: M8x65mm Zinc Plated Steel Spindle
With Nut



GH GoodHand UK

goodhanduk.co.uk

01908 221 151