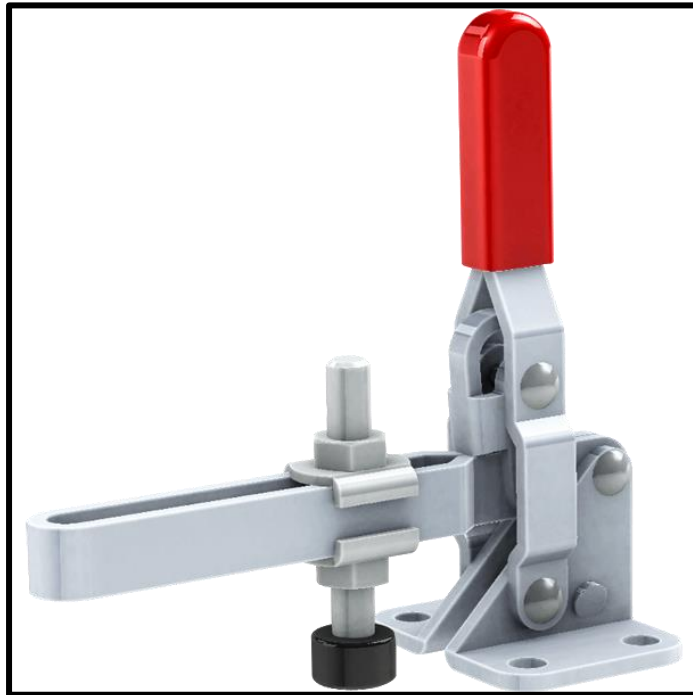


Vertical Toggle Clamp

Part No. GH-101-AL



Product Description

Vertical Toggle Clamp Flat
Base Slotted Arm Size 50Kg

Key Features

Overall Height: 74.4mm
Underarm Height: 16mm
Arm Length: 51mm
Holding Force: 50daN

Other Features

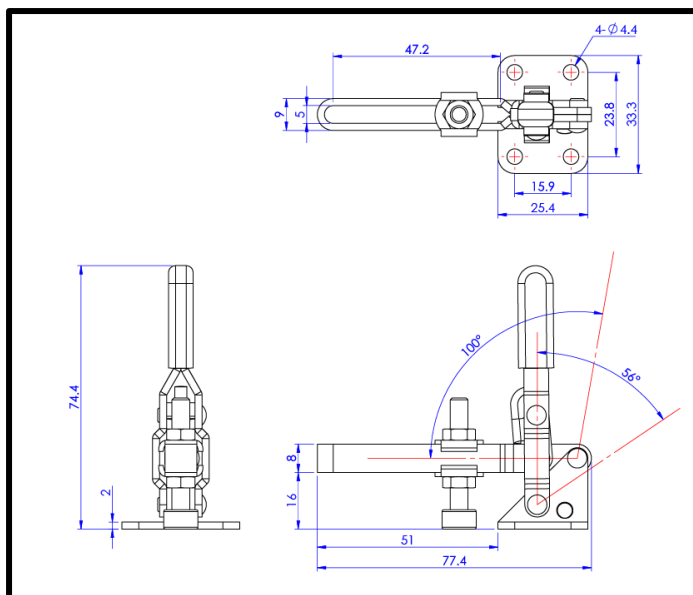
Arm Opens: 100°
Handle Opens: 56°
Weight: 0.07Kg

Material

Clamp: Zinc Plated Mild Steel
Spindle: Neoprene Tipped Steel
Handle: uPVC

What's In The Bag?

GH-101-AL: Toggle Clamp
FC-053708-LP: M5x37mm Neoprene Tipped
Steel Spindle With Nuts
2x FW-100: Flanged Washers For M5 Spindle



goodhanduk.co.uk

01908 221 151