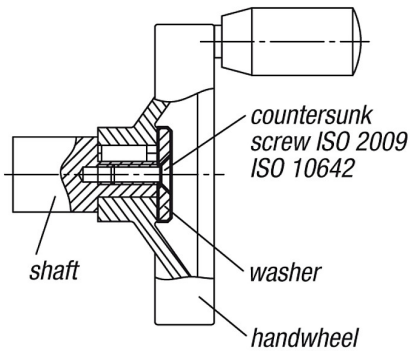


Washers

Item description/product images



Description

Material, surface finish:

Steel 1.0718, black oxide finish.

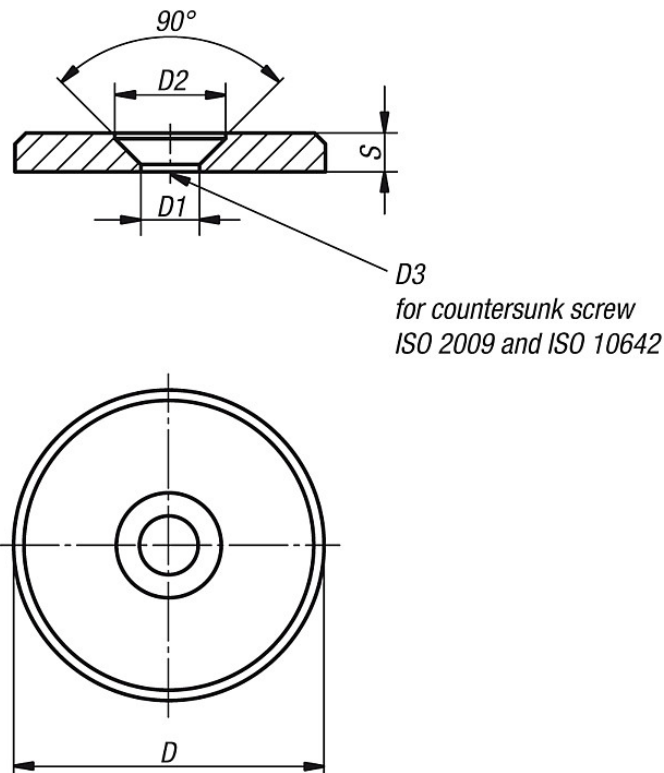
Stainless steel 1.4305, natural finish.

Note:

Together with a countersunk screw DIN EN ISO 2009 or DIN EN ISO 10642 the washers are used at the front surface of shaft extensions for axial fastening and securing of handwheels and handles using a hub slot.

The washers can be used with the handwheels K0256, K0257, K0258, K0259, K0671, K0160, K0161, K0162, K0163, K0164, K0165 and crank handles K0266, K0659, K0268.

Drawings



Overview of items

Order No. steel	Order No. stainless steel	D	D1	D2	D3	S
K0173.00416	K0173.10416	16	4,3	8,4	M4	3
K0173.00420	K0173.10420	20	4,3	8,4	M4	3
K0173.00522	K0173.10522	22	5,3	10	M5	3,5

Washers

Overview of items

Order No. steel	Order No. stainless steel	D	D1	D2	D3	S
K0173.00525	K0173.10525	25	5,3	10	M5	3,5
K0173.00528	K0173.10528	28	5,3	10	M5	3,5
K0173.00632	K0173.10632	32	6,4	12	M6	4
K0173.00636	K0173.10636	36	6,4	12	M6	4
K0173.00640	K0173.10640	40	6,4	12	M6	5
K0173.00645	K0173.10645	45	6,4	12	M6	6
K0173.00652	K0173.10652	52	6,4	12	M6	6