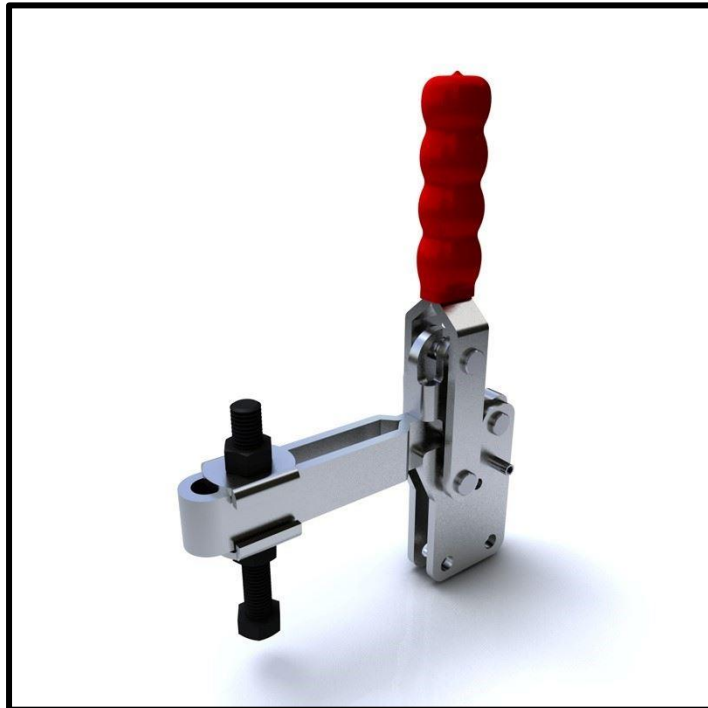


Vertical Toggle Clamp

Part No. GH-14501-B



Product Description

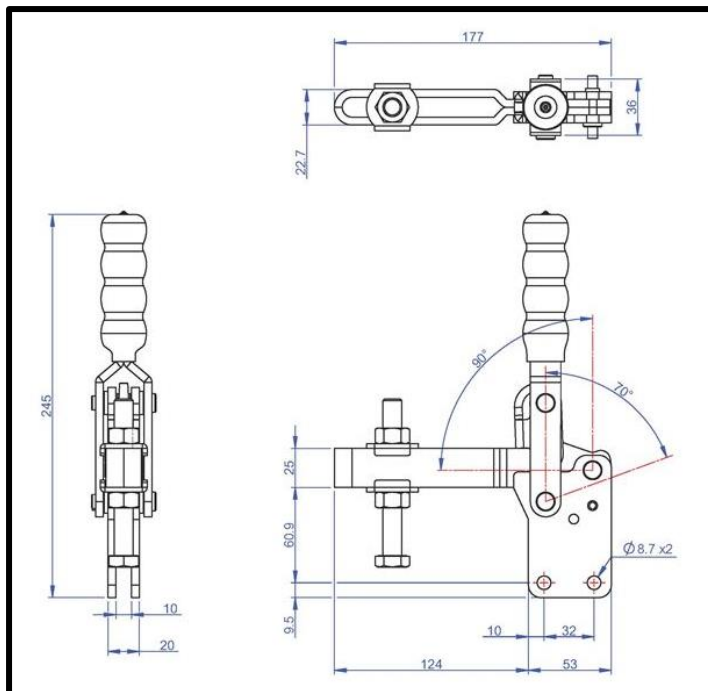
Vertical Toggle Clamp Straight
Base Slotted Arm Size 450Kg

Key Features

Overall Height: 245mm
Underarm Height: 60.9mm
Arm Length: 124mm
Holding Force: 450Kg

Other Features

Arm Opens: 90°
Handle Opens: 70°
Weight: 1.3Kg



Material

Clamp: Zinc Plated Mild Steel
Spindle: Zinc Plated Mild Steel
Handle: uPVC

What's In The Bag?

GH-14501-B: Toggle Clamp
SA-121017: M12x100mm Zinc Plated Steel
Spindle With Nuts
2x FW-120: Flanged Washers for M12 Spindle



goodhanduk.co.uk

01908 221 151