

# Block hinges with counterbore, long version

## Item description/product images



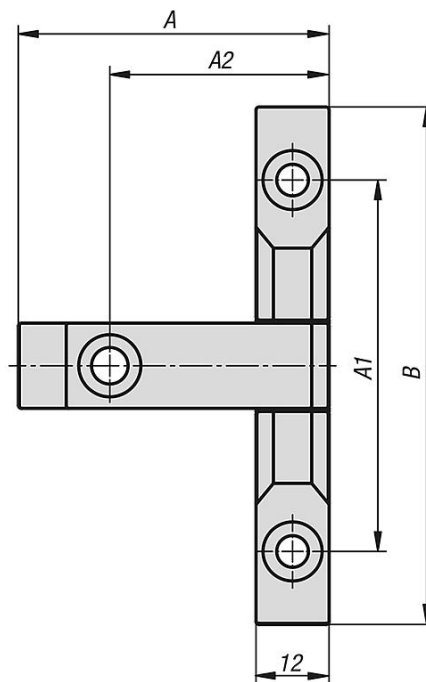
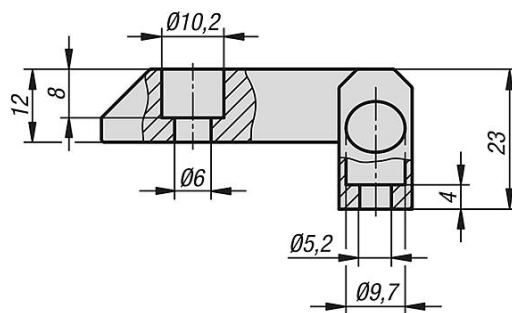
### Description

**Material:**  
Steel.

**Version:**  
Steel electro zinc-plated or high-gloss trivalent passivated.

**Note:**  
Block hinges for overlapping doors. Can be mounted left or right. Opening angle 180°. The hinges are supplied assembled.

## Drawings



## Overview of items

### Block hinges with counterbore, long version

Order No.	Finish	A	A1	A2	B
K1144.00630061	galvanised	51	61	30	85

**Block hinges with counterbore, long version****Overview of items**

Order No.	Finish	A	A1	A2	B
K1144.10630061	high-gloss chromed	51	61	30	85